

CUYAHOGA COUNTY PUBLIC HEALTH COLLABORATIVE

CUYAHOGA COUNTY
BOARD OF HEALTH
YOUR TRUSTED SOURCE FOR PUBLIC HEALTH INFORMATION



January 1 - 7, 2023 (MMWR Week 1)

Highlights

Flu activity level was decreased to 'moderate low' for the 3rd consecutive week.

Flu activity rating explanation and weekly flu reports can be found here: <https://www.ccbh.net/weekly-flu-surveillance-reports/>

11.8% of deaths reported were due to pneumonia.

1 flu death were reported this week. 10 flu deaths so far this season, including 2 pediatric flu deaths.

38 flu associated hospitalizations were reported this week. 1,277 hospitalizations for the flu season.

2.6% of emergency department visits were for flu like symptoms.

Local Flu Activity Dashboard (All data are preliminary and may change as updated data are received.)

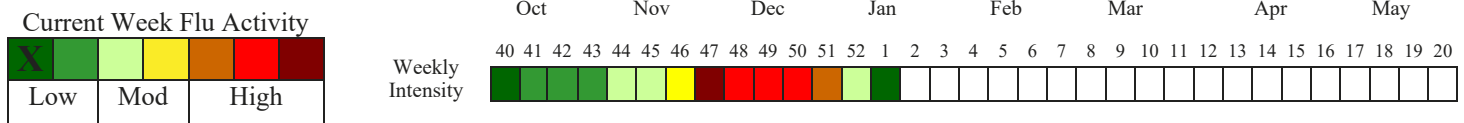


Table 1. Cuyahoga County Influenza Data Dashboard

Influenza (Flu) Indicator	Current Activity Level	Activity Compared to Last Week	#Weeks ¹²³⁴	2022-2023 Season Total/Trend
Percent of pneumonia deaths & number of flu related deaths - [Fig 1]	Pneumonia: 11.8% Flu: 1 Death	188.3% (2)	2 ▲ 2 ▼	P&I death slightly below 5-year median. Flu deaths = 10.
Flu associated hospitalizations [Fig 2]	38	(83)	4 ▼	Highest in past 10 yrs. n = 1277
School absenteeism due to ILLNESS ONLY – [Fig 3A]	1.87%	N/A	N/A	Significantly (Sig.) higher than 5-year median
School absenteeism due to ALL CAUSES – [Fig 3B]	4.18%	N/A	N/A	Sig. higher than 5-year median
Emergency room visits due to ILI [Fig 4]	211	(0.9%)	1 ●	Sig. higher than 5-year median
Sales of over-the-counter medications used to treat ILI. [Fig 5]	299	(24.5%)	1 ▼	Sig. higher than 5-year median
Congestion & cough complaints	14.1%	(22.3%)	4 ▼	Higher than 5-year median.

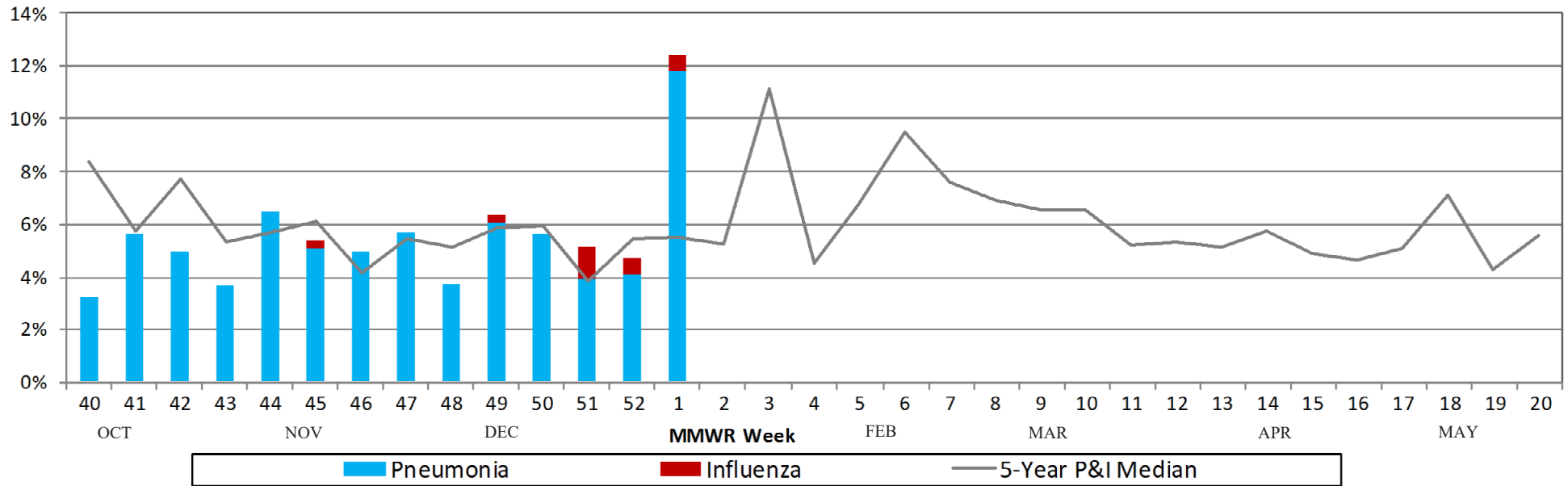
¹Due to small percentages, caution should be used while interpreting the 'Activity Compared to Last Week' box.

²For figures 3a-3b, ▲ = (Increase ≥ 10%), ▼ = (Decrease ≥ -10%), ● = Stable (-9.9% to +9.9%)

³For figures 1, 4-5, and congestion & cold complaints ▲ = (Increase ≥ 5%), ▼ = (Decrease ≥ -5%), ● = Stable (-4.9% to +4.9%)

⁴For flu related deaths and hospitalizations (Fig 1 & 2) ▲ = (Increase # of deaths/cases), ▼ = (Decrease # of deaths/cases), ● = Stable (Same # of deaths/cases)

**Figure 1: Percentage of Deaths Due to Pneumonia & Influenza (P&I)
Cleveland, Lakewood & Parma Vital Statistics Departments**



**Figure 2: Number of Influenza-Associated Hospitalizations
in Cuyahoga County (using event date)**

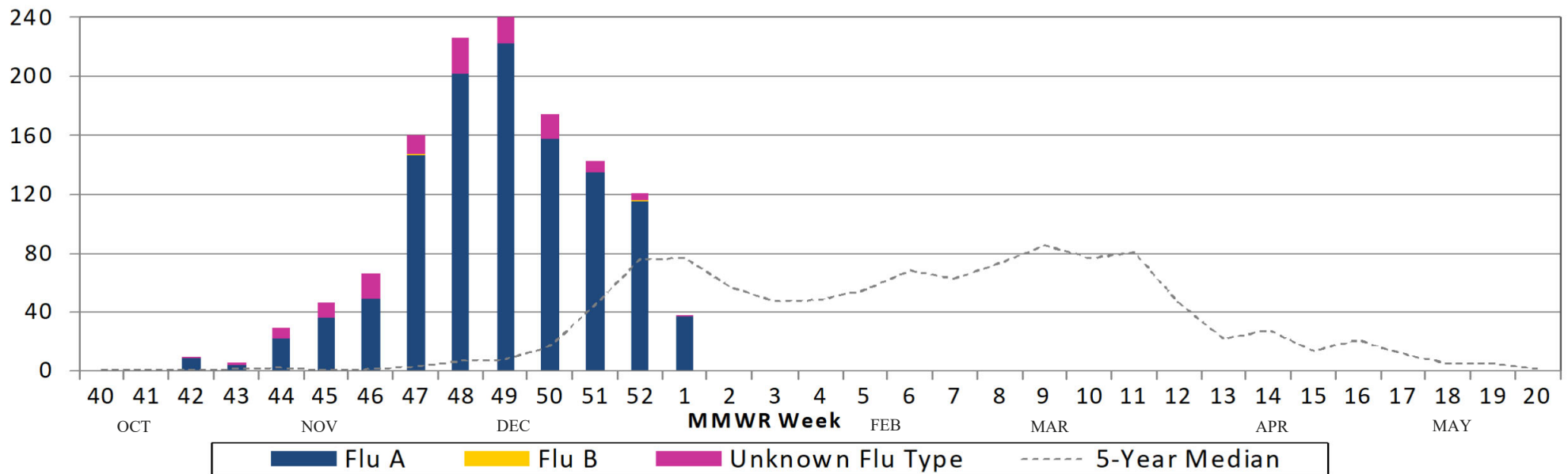


Figure 3A: School Absenteeism (*due to any illness*) in Cuyahoga County

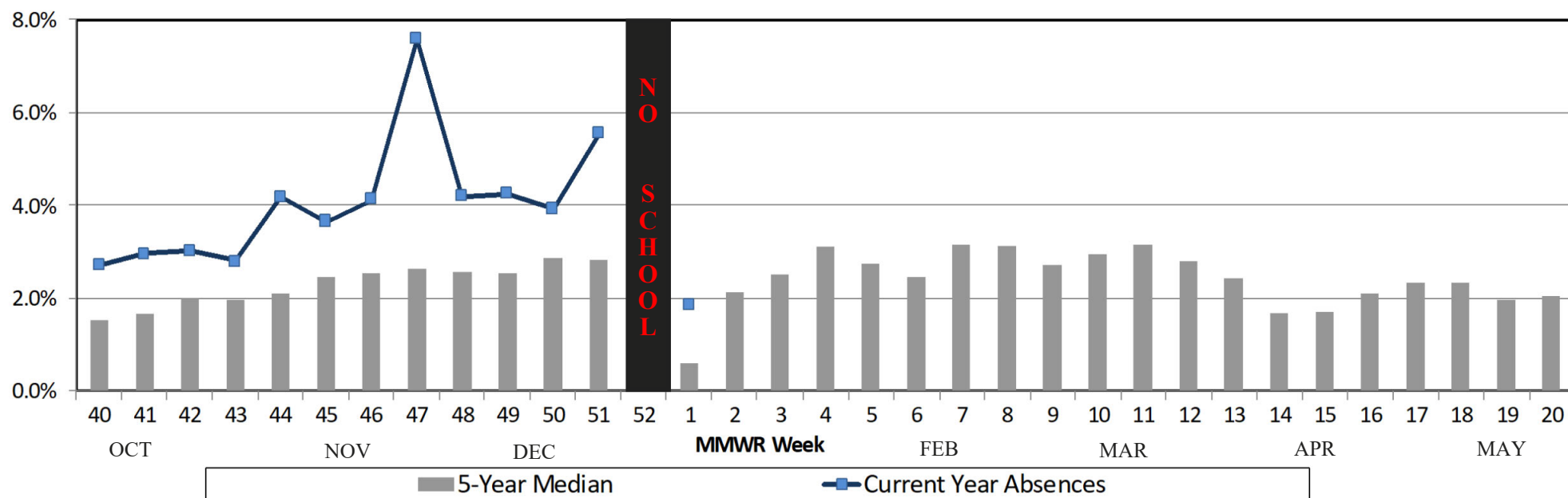


Figure 3B: School Absenteeism (*due to any reason*) in Cuyahoga County

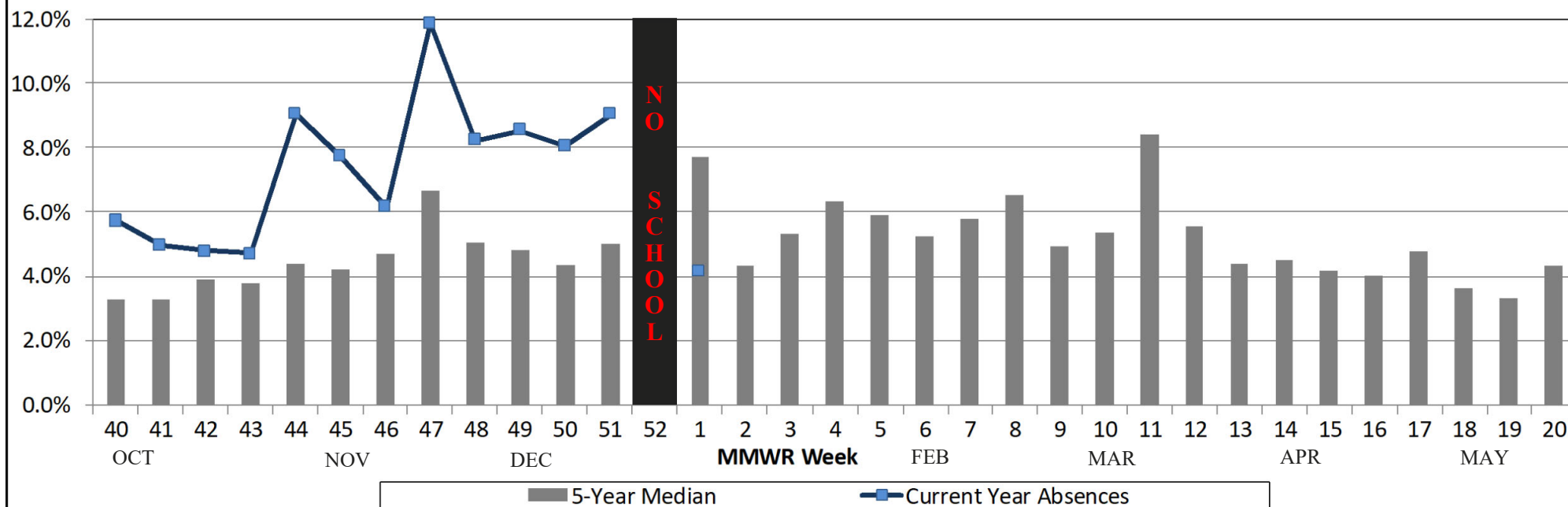


Figure 4: Cuyahoga County Hospital ED Visits for ILI & Fever Symptoms by Age Group

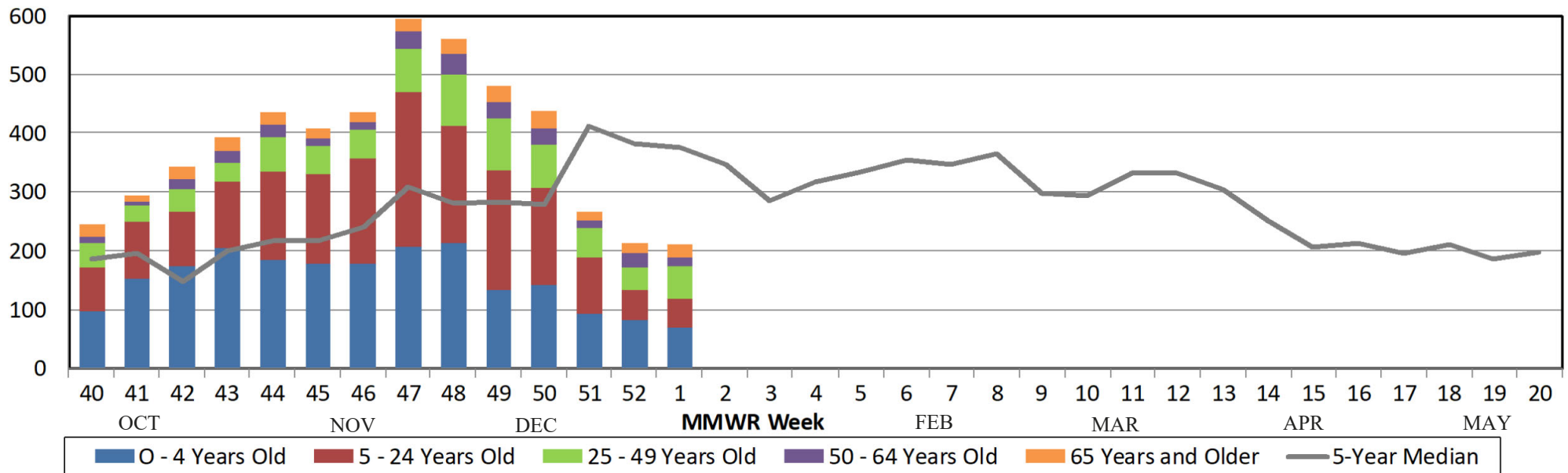
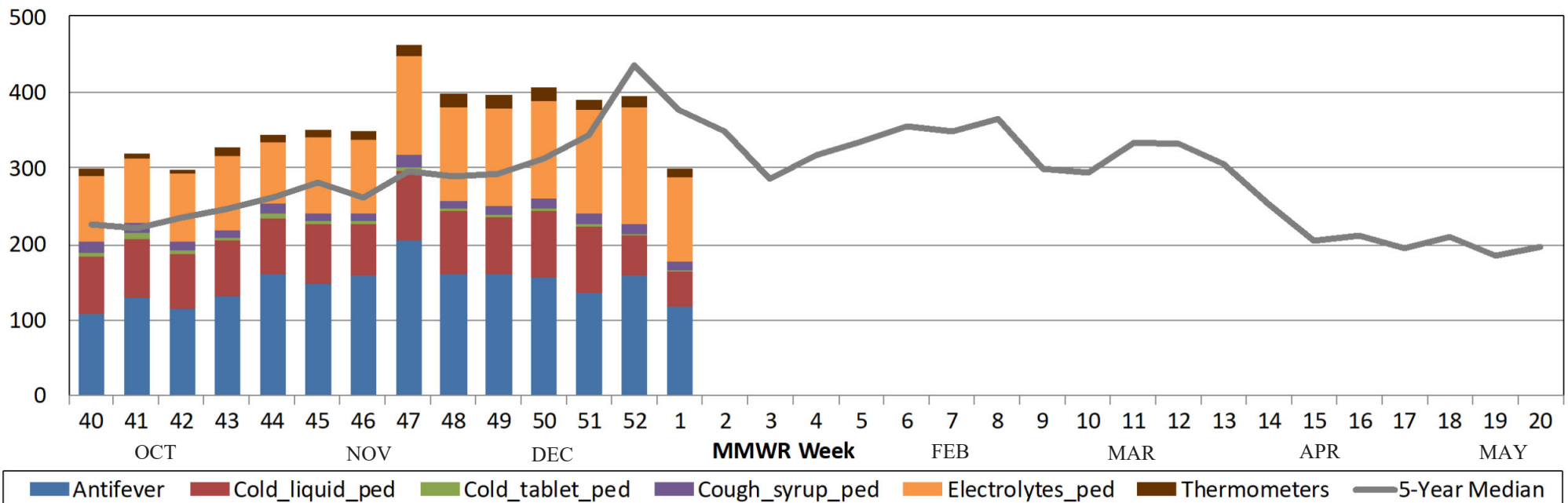


Figure 5: Comparison of Average Weekly OTC Products Sold in Cuyahoga County Drugstores



Sources of Influenza Surveillance Data

Five types of data sources are examined on a weekly basis to help determine the influenza activity level for Cuyahoga County:

- 1) **Ohio Department of Health (ODH) Seasonal Influenza Activity Summary:** The ODH influenza summary provides state-wide data . Data used from this report include: frequency of fever plus influenza-like illness (ILI) associated hospitalizations, number of influenza-associated pediatric mortalities, and number of lab-confirmed influenza cases.
 - A) **Influenza-associated Hospitalizations (ODRS):** Influenza-associated hospitalizations are reported by the Cuyahoga County Board of Health (CCBH) and hospitals using the Ohio Disease Reporting System (ODRS). Hospitalizations can be used as an indicator of the severity of illness during a particular influenza season. This condition became reportable in January 2009.
 - B) **Influenza-associated Pediatric Mortality (ODRS):** Influenza-associated pediatric mortalities are reported into ODRS by CCBH and hospital staff. Pediatric deaths can be an indicator of the severity of illness during the influenza season. This condition became reportable in 2005.
- 2) **Mortality Reporting System (Vital Statistics):** Vital Statistics offices in Cuyahoga County (Cleveland, Lakewood, & Parma) reports the percentage of deaths that are due to pneumonia or influenza that occur within their jurisdiction. Cleveland issues death certificates for 57 of the 59 cities in the county.
- 3) **School Absenteeism data (due to illness and due to any reason):** More than 50 Cuyahoga County schools provide absenteeism data for each Tuesday on the number children absent due to any illness or due to any reason as well as sentinel schools that report week absenteeism data.
- 4) **National Retail Data Monitor (NRDM)-OTC Drug Purchases:** The NRDM collects over-the-counter (OTC) drug sales information from Cuyahoga County chain drug stores and grocery stores. Pediatric cold products, anti-fever products, and thermometer sales are monitored on a weekly basis.
- 5) **Emergency Department Visits (EpiCenter):** EpiCenter collects emergency department chief complaint data from hospitals and urgent care facilities across Cuyahoga County and classifies them into symptom and syndrome categories. Rates for chief complaints regarding fever + ILI and other symptoms commonly detected during the winter are analyzed.