

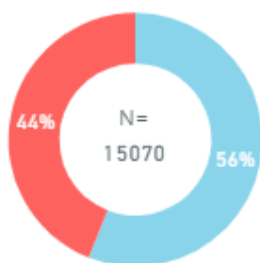
# Cuyahoga County COVID-19 Report – MMWR Week 44

## Cuyahoga County Board of Health Jurisdiction Data

Case Overview			Weekly Trends
Total Cases	15247	100.0%	New Cases Reported** ▲ More than previous week
Lab-confirmed	14084	92.4%	
Probable	1163	7.6%	New Deaths Reported** ▲ More than previous week
Total Hospitalizations	1338	8.8%	
Total ICU Admissions	308	2.0%	*Measure changed to ODH definition 8/2020 **Reporting period changed to MMWR weeks 11/2020
Total Deaths	602	3.9%	
Lab-confirmed	574	3.8%	
Probable	28	0.2%	
Total Presumed Recovered*	13061	85.7%	

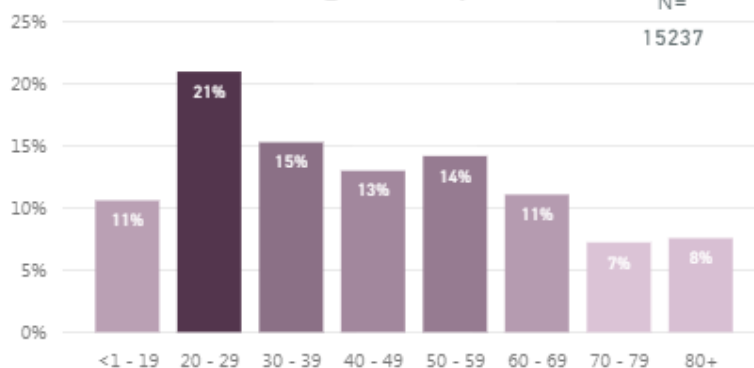
## Case Demographics

Sex  
● Female ● Male

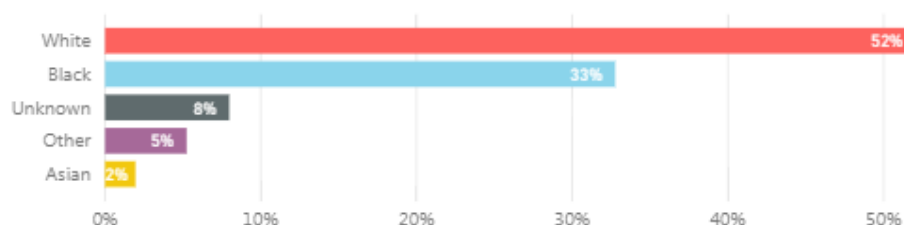


Age Group

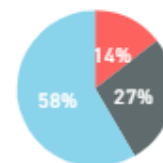
N=15237



Race

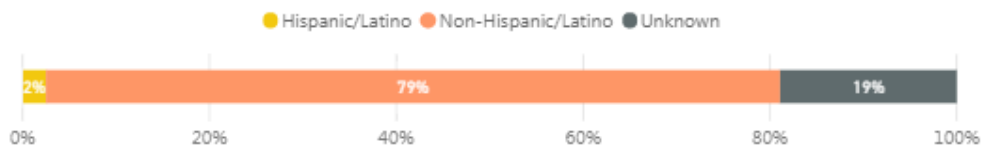


Health Care Worker

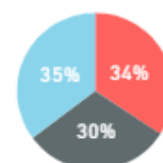


● Yes ● Unknown ● No

Ethnicity



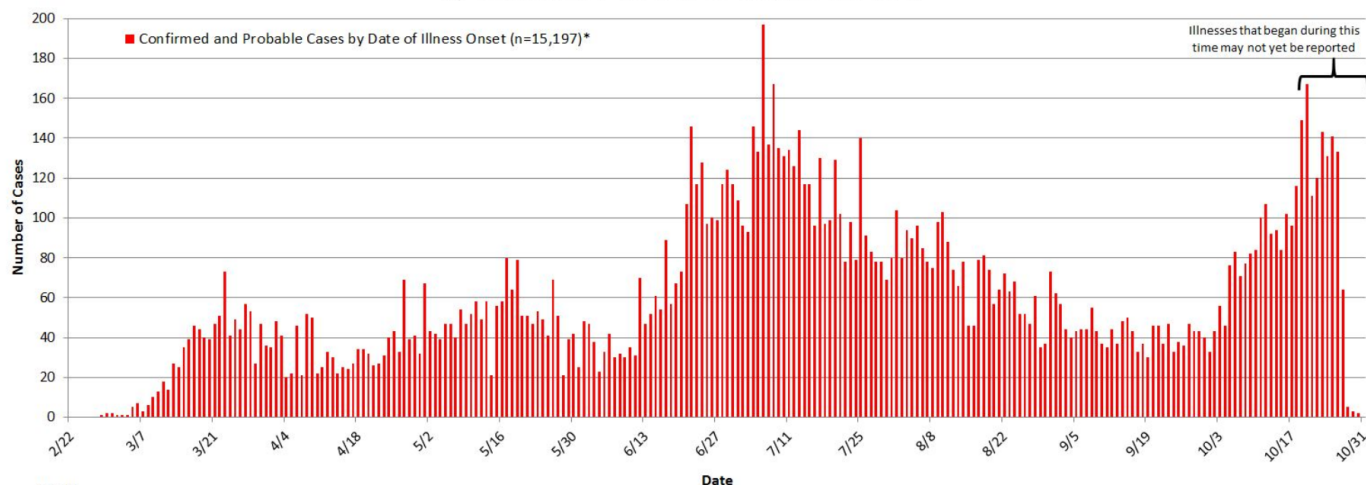
Pre-Existing Condition



● Yes ● Unknown ● No

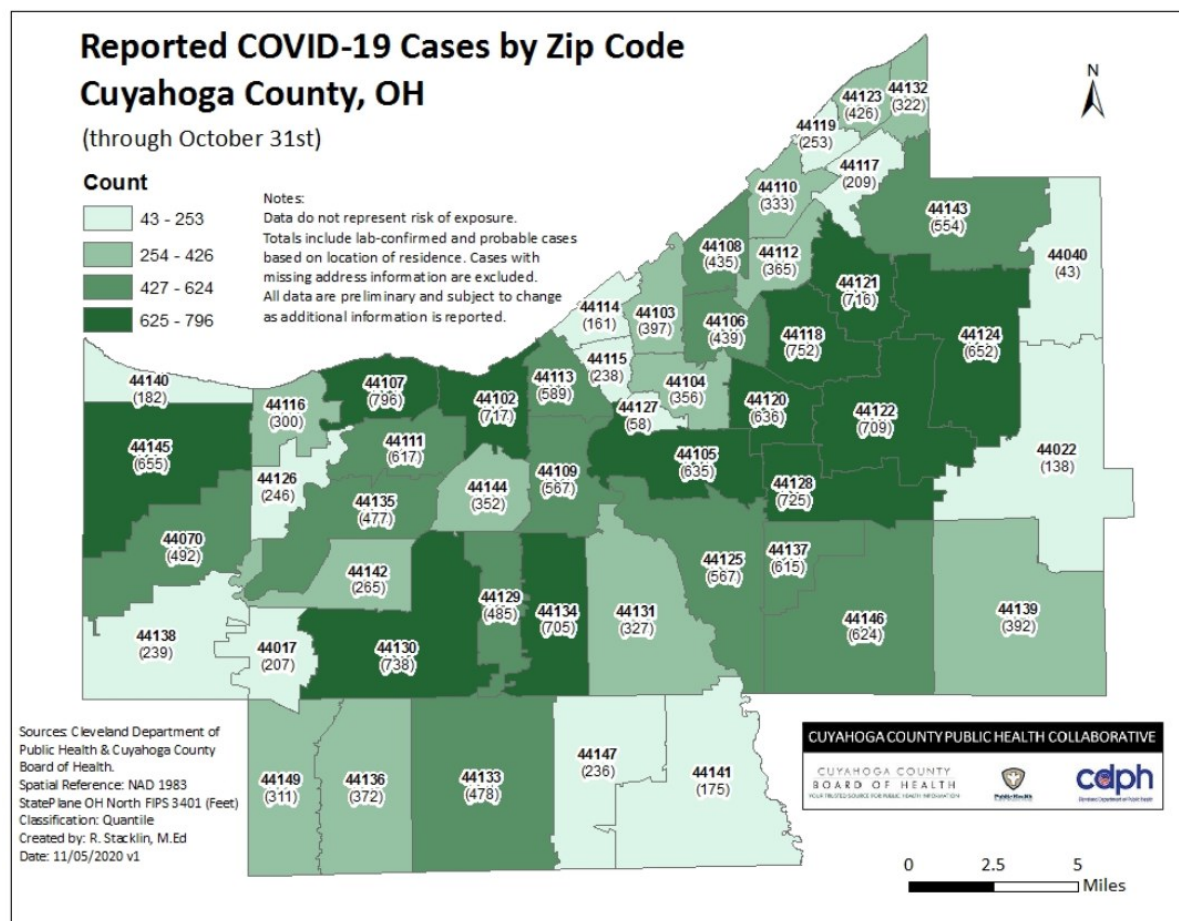
## Epi Curve

Cuyahoga County Board of Health Jurisdiction COVID-19 Cases (n=15,247)  
by Illness Onset Date as of October 31, 2020



\*Note:  
Confirmed cases (n=14,079) have lab evidence of COVID-19; missing data n=5. Illness onset date was calculated for n=5,155.  
Probable cases (n=1,118) have clinical disease and an epidemiologic link to a confirmed COVID-19 case; missing data n=45.

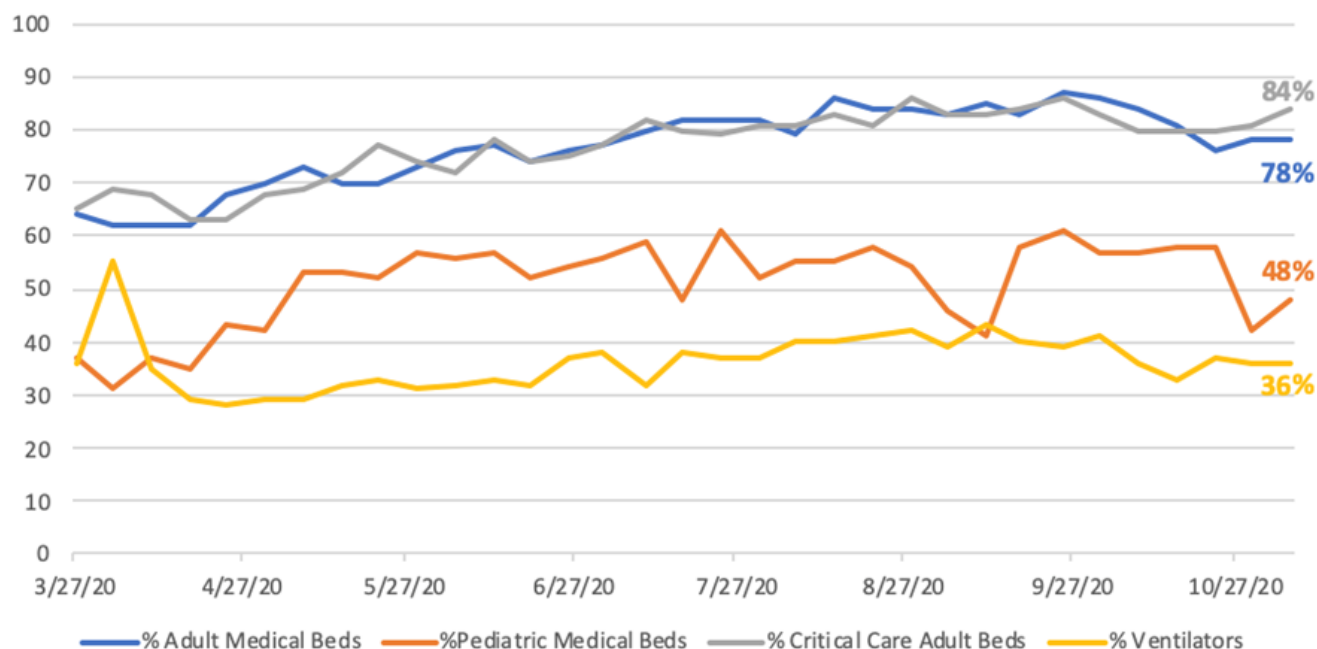
## Map of COVID-19 cases in Cuyahoga County (including City of Cleveland) by ZIP Code



# Cuyahoga County Data

## Hospital Utilization

**Cuyahoga County Hospital Utilization  
As of November 6, 2020**



## Hospital Testing

### PCR Testing for SARS-CoV-2 via Cuyahoga County hospital facilities

Reporting Week	Total Tests	% Positive
10/7-10/13	21,357	3.8%
10/14-10/20	20,707	5.1%
10/21-10/27	23,518	6.7%
10/28-11/3	24,935	10.1%

## Nursing Home Testing

### COVID-19 RT-PCR Testing in Cuyahoga County nursing homes via Centers for Medicare & Medicaid Services

Reporting Period	Total Tests	% Positive
10/15-10/28	32,719	5.8%

Report Notes: November 6, 2020

Data are through 10/31/2020 unless otherwise noted.

Analyses were conducted week of 11/1/2020 by R. Stacklin, S. Szabo, T. Khaled, S. Smith, & H. Gullett. All data are preliminary and subject to change as additional information is reported.