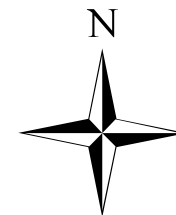
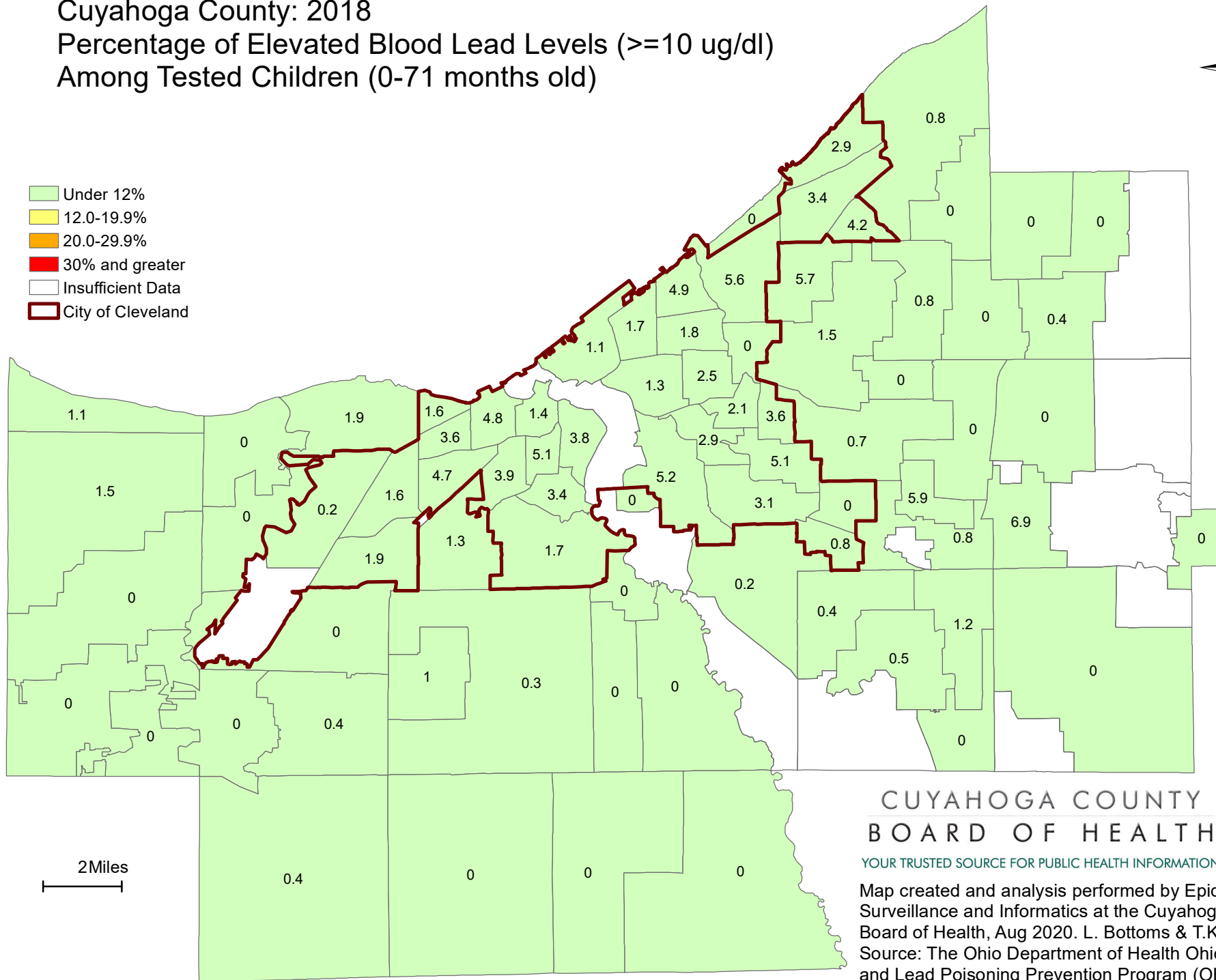


Cuyahoga County: 2018 Percentage of Elevated Blood Lead Levels (≥ 10 ug/dl) Among Tested Children (0-71 months old)



- Under 12%
- 12.0-19.9%
- 20.0-29.9%
- 30% and greater
- Insufficient Data
- City of Cleveland



2 Miles
|-----|

CUYAHOGA COUNTY
BOARD OF HEALTH

YOUR TRUSTED SOURCE FOR PUBLIC HEALTH INFORMATION

Map created and analysis performed by Epidemiology, Surveillance and Informatics at the Cuyahoga County Board of Health, Aug 2020. L. Bottoms & T.Khaled. Data Source: The Ohio Department of Health Ohio Healthy Homes and Lead Poisoning Prevention Program (OHHLPPP).