

# Food Desert Focus Areas Cuyahoga County, 2017

## DISEASE QUARTILE SCORE

## LEE / MAPLE / GARFIELD NORTHEAST

**Legend**

- ★ Major Grocery Store (8)
- Focus Area

**Disease Deaths by Tract: Quartile Score (4-16)**

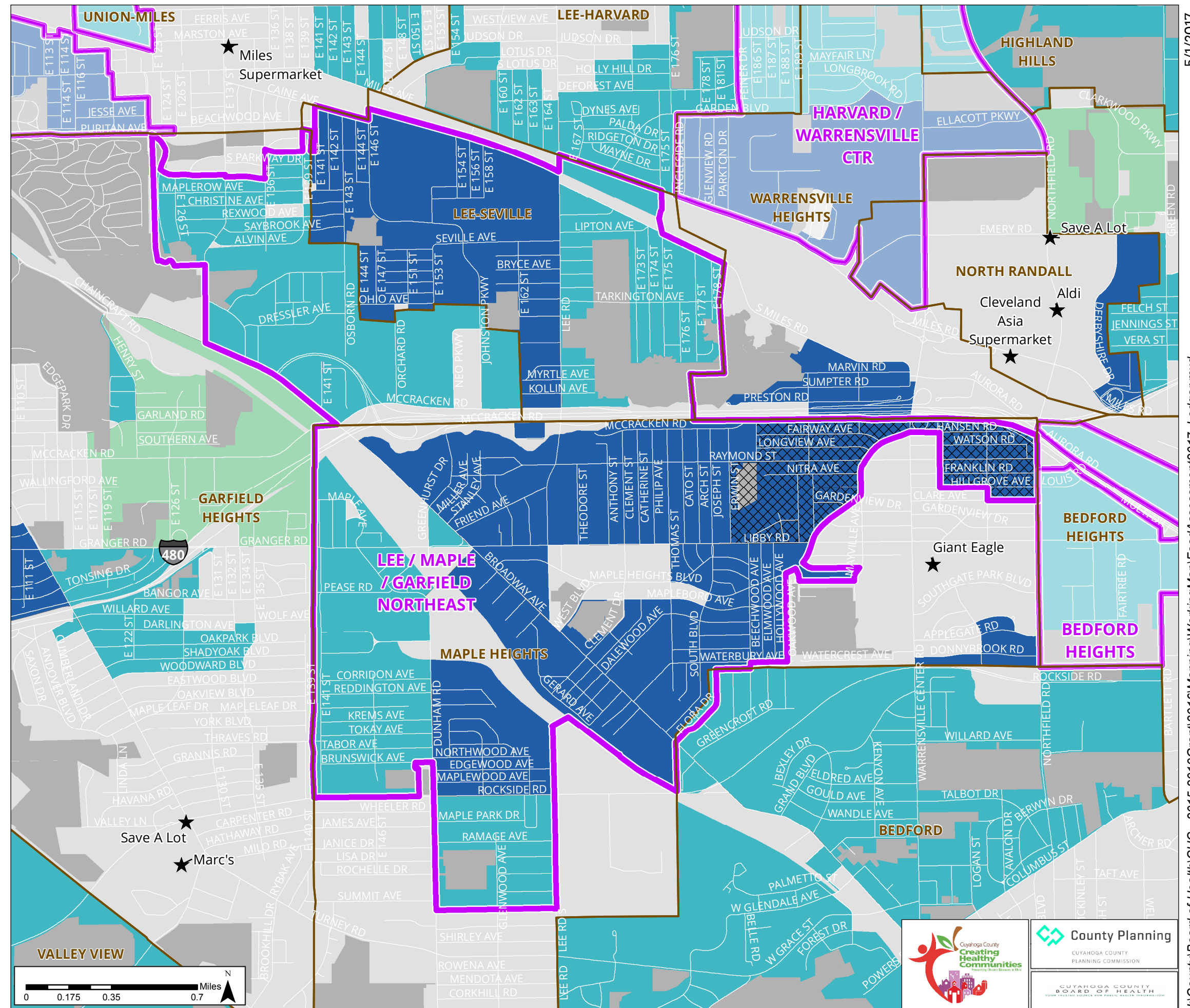
**Stroke+Heart Disease+Diabetes+Cancer**

- 4
- 5 - 8
- 9 - 12
- 13 - 16

Distressed Area\*

Non-Food Desert Area\*\*

Open Space



**\*Distressed Areas:**  
**High Poverty:**  
 Greater than 20% of population is below poverty level  
**Low Vehicle Access:**  
 More than 100 Households per tract are without a vehicle.

**\*\* Non-Food Desert Areas:**  
**Distance:**  
 Less than 1/2 mile to nearest grocery - OR  
**Income:**  
 Less than 30% of population below 200% of poverty level - OR  
**Population:**  
 Less than 10 persons per census block

Sources:  
 Store Locations: Cleveland and Cuyahoga County Boards of Health, 2016  
 Disease: Cuyahoga County Board of Health, 2012-2016  
 Poverty/Income: U.S. Bureau, American Community Survey, 2010-2014.  
 Food Deserts: Cuyahoga County Planning Commission, 2017.

