

Food Desert Focus Areas Cuyahoga County, 2017

DISEASE QUARTILE SCORE

BEDFORD-SOUTH / OAKWOOD

Legend

- ★ Major Grocery Store (1)
- Focus Area

Disease Deaths by Tract: Quartile Score (4-16)

Stroke+Heart Disease+Diabetes+Cancer

- 4
- 5 - 8
- 9 - 12
- 13 - 16

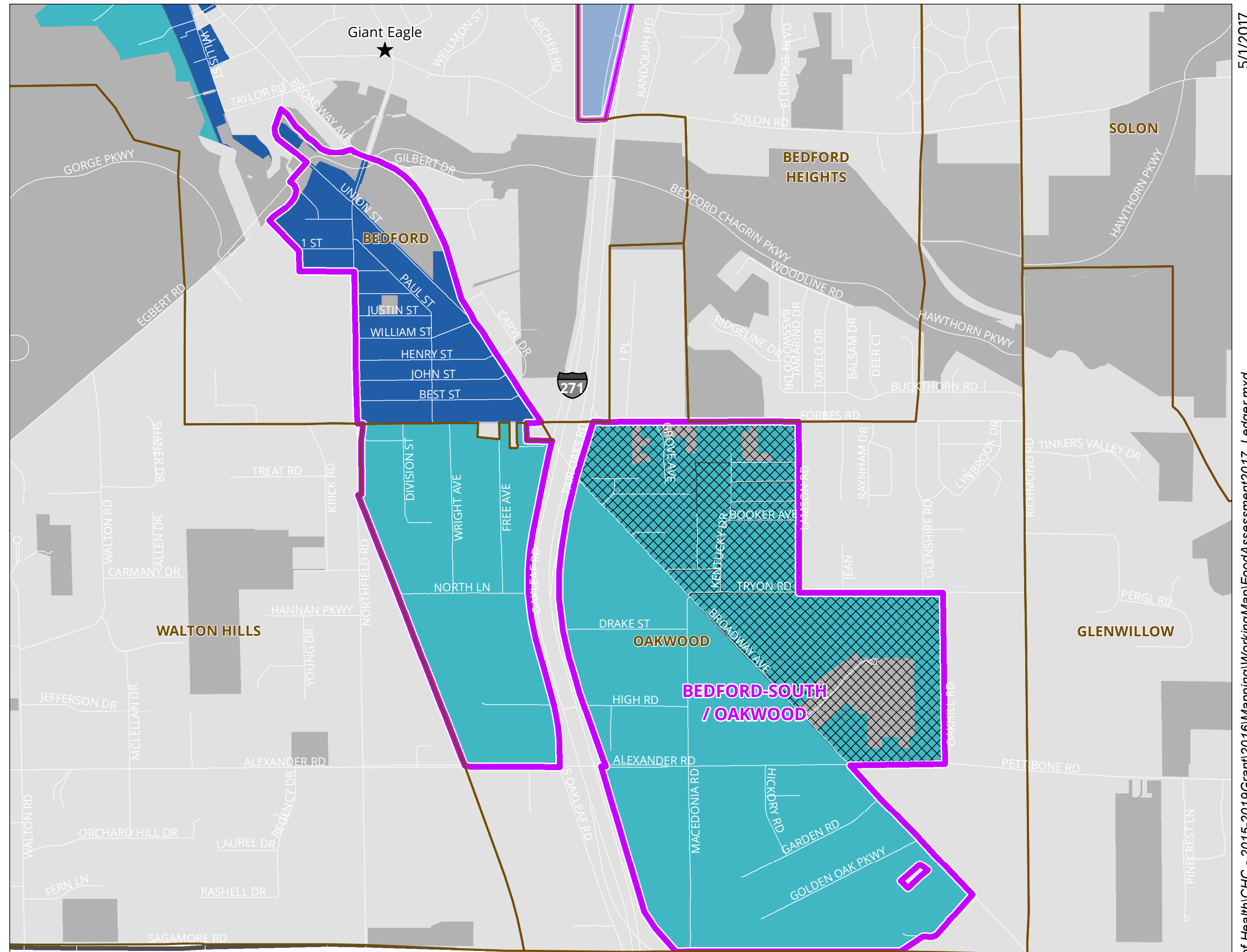
Distressed Area*

Non-Food Desert Area**

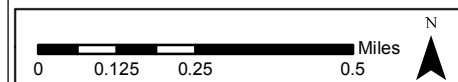
Open Space

***Distressed Areas:**
High Poverty:
 Greater than 20% of population is below poverty level
Low Vehicle Access:
 More than 100 Households per tract are without a vehicle.

**** Non-Food Desert Areas:**
Distance:
 Less than 1/2 mile to nearest grocery - OR
Income:
 Less than 30% of population below 200% of poverty level - OR
Population:
 Less than 10 persons per census block



Sources:
 Store Locations: Cleveland and Cuyahoga County Boards of Health, 2016
 Disease: Cuyahoga County Board of Health, 2012-2016
 Poverty/Income: U.S. Bureau, American Community Survey, 2010-2014.
 Food Deserts: Cuyahoga County Planning Commission, 2017.



SUMMIT
COUNTY