

Food Desert Focus Areas Cuyahoga County, 2017

Legend

- ★ Major Grocery Store (3)
- Focus Area
- Food Desert Areas**
- By Miles to Nearest Grocery
- 0.0 - 0.5 (Non-food Desert)
- 0.6 - 1.0
- 1.1 - 2.0
- 2.1 or More
- ▨ Distressed Area*
- Non-Food Desert Area**
- Open Space

*Distressed Areas:

High Poverty:

Greater than 20% of population is below poverty level

Low Vehicle Access:

More than 100 Households per tract are without a vehicle.

** Non-Food Desert Areas:

Distance:

Less than 1/2 mile to nearest grocery - OR

Income:

Less than 30% of population below 200% of poverty level - OR

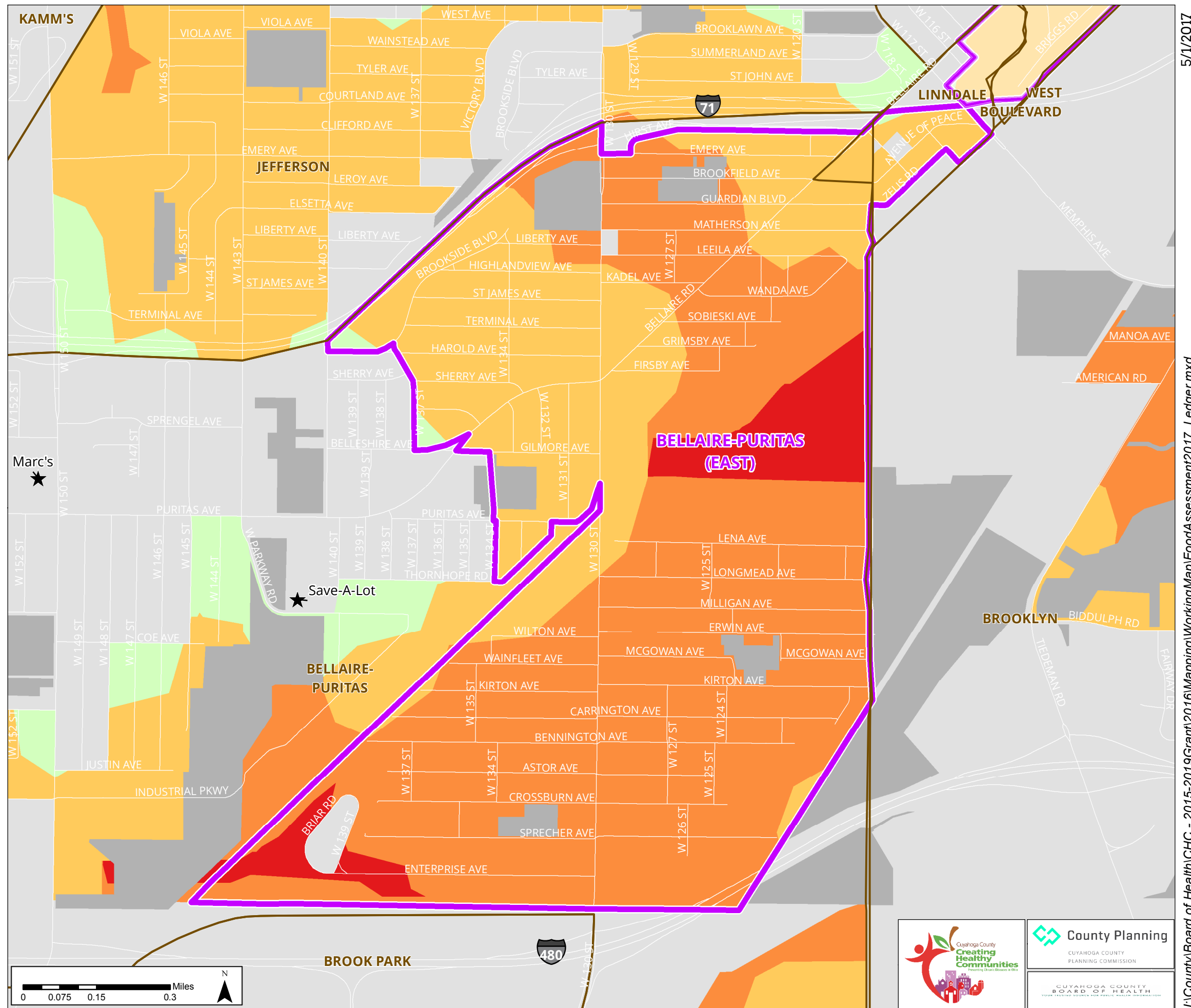
Population:

Less than 10 persons per census block

Sources:

Store Locations: Cleveland and Cuyahoga County Boards of Health, 2016
 Disease: Cuyahoga County Board of Health, 2012-2016
 Poverty/Income: U.S. Bureau, American Community Survey, 2010-2014.
 Food Deserts: Cuyahoga County Planning Commission, 2017.

DISTANCE FROM GROCERY



BELLAIRE-PURITAS (EAST)

5/1/2017

I:\County\Board of Health\CHC - 2015-2019Grant\2016Mapping\WorkingMap\FoodAssessment2017_Ledger.mxd