

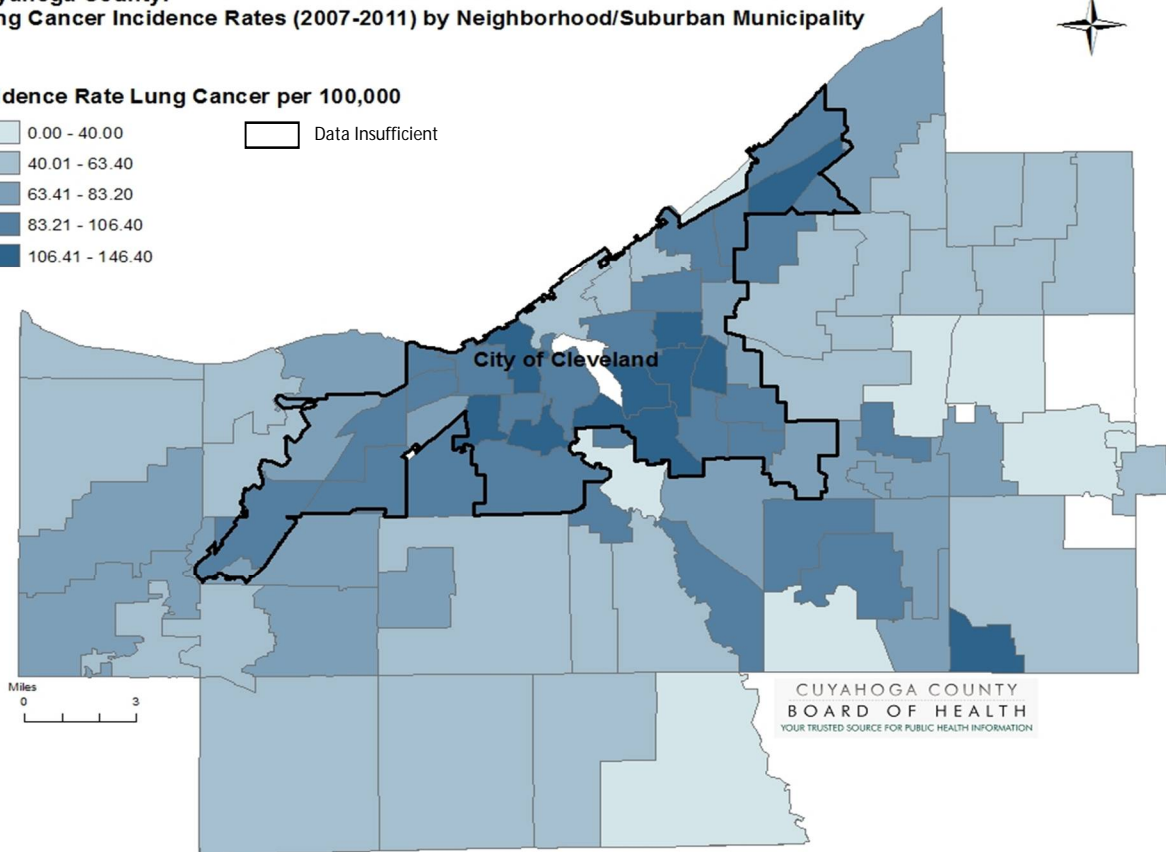
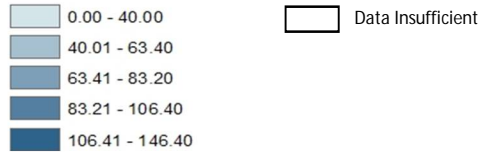
LUNG CANCER

The rate of lung cancer for Cuyahoga County from 2007-2011 was 71.4 per 100,000 population, compared to 71.6 for the state of Ohio and 63.7 for the nation.³

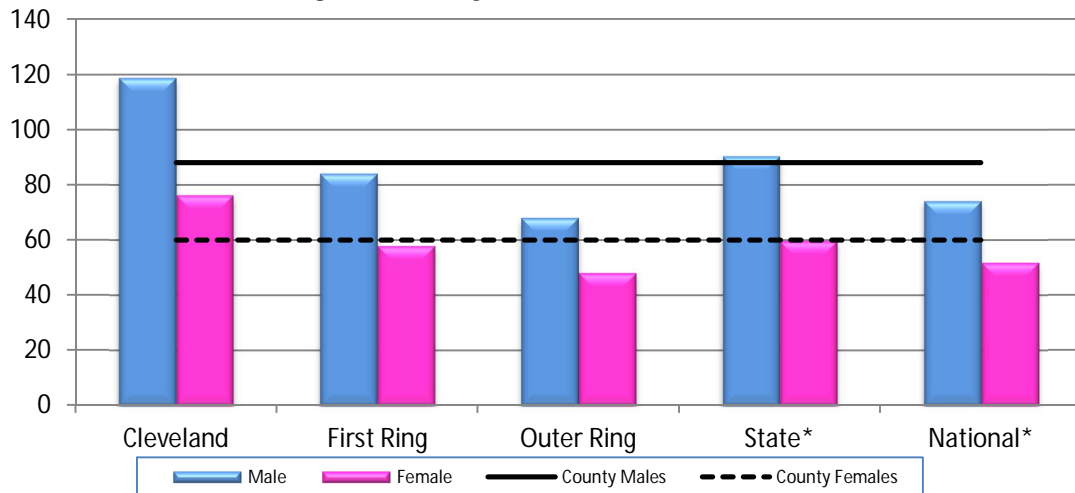
Incidence

**Cuyahoga County:
Lung Cancer Incidence Rates (2007-2011) by Neighborhood/Suburban Municipality**

Incidence Rate Lung Cancer per 100,000



Lung Cancer by Gender (2007-2011)



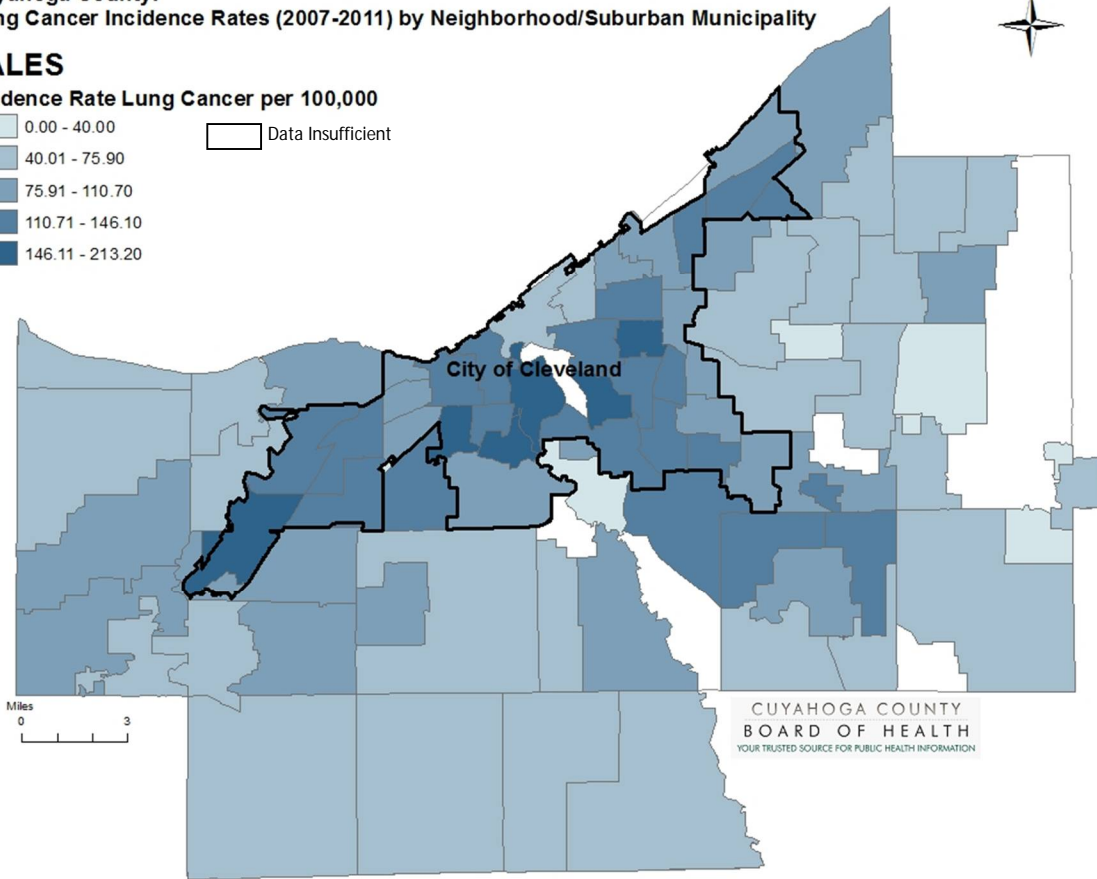
	Cleveland	First Ring	Outer Ring	Cuyahoga County	State	National
Male	118.9	84.1	68.1	87.8	87.5	76.6
Female	76.3	57.8	48.3	59.9	59.8	54.1

**Cuyahoga County:
Lung Cancer Incidence Rates (2007-2011) by Neighborhood/Suburban Municipality**

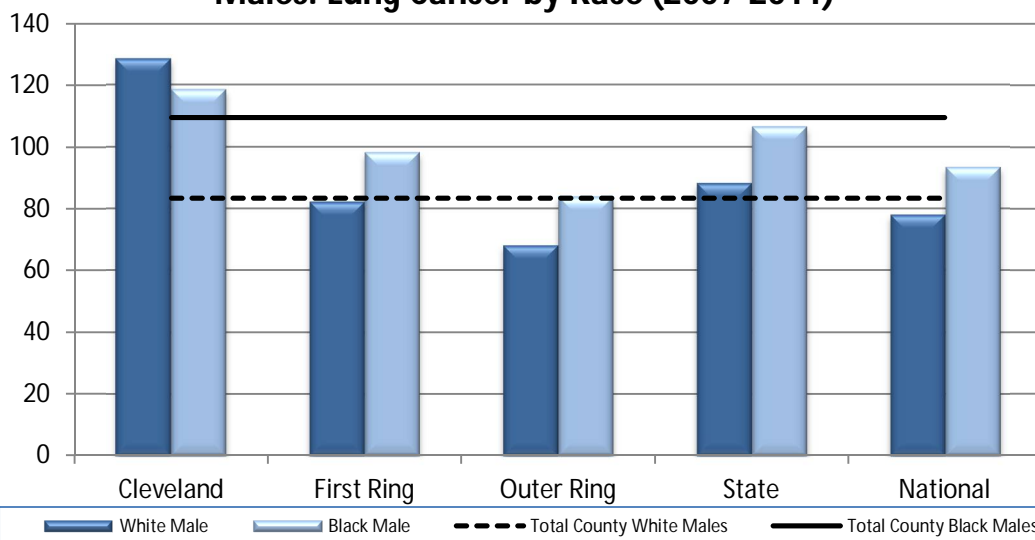


MALES

Incidence Rate Lung Cancer per 100,000



Males: Lung Cancer by Race (2007-2011)



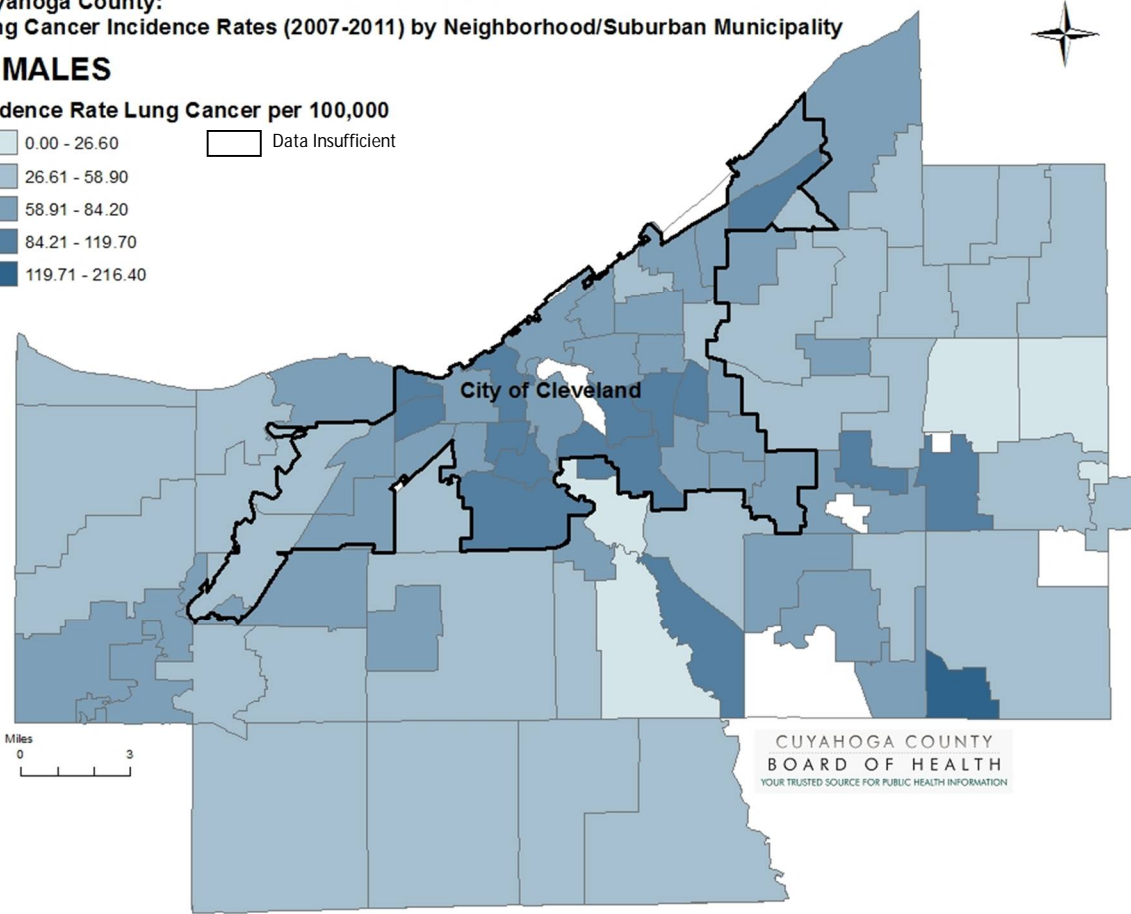
	Cleveland	First Ring	Outer Ring	Cuyahoga County	State	National
White Male	128.4	82.2	68.2	83.3	86.4	76.1
Black Male	118.5	98.1	83.9	109.7	102.0	91.3

**Cuyahoga County:
Lung Cancer Incidence Rates (2007-2011) by Neighborhood/Suburban Municipality**

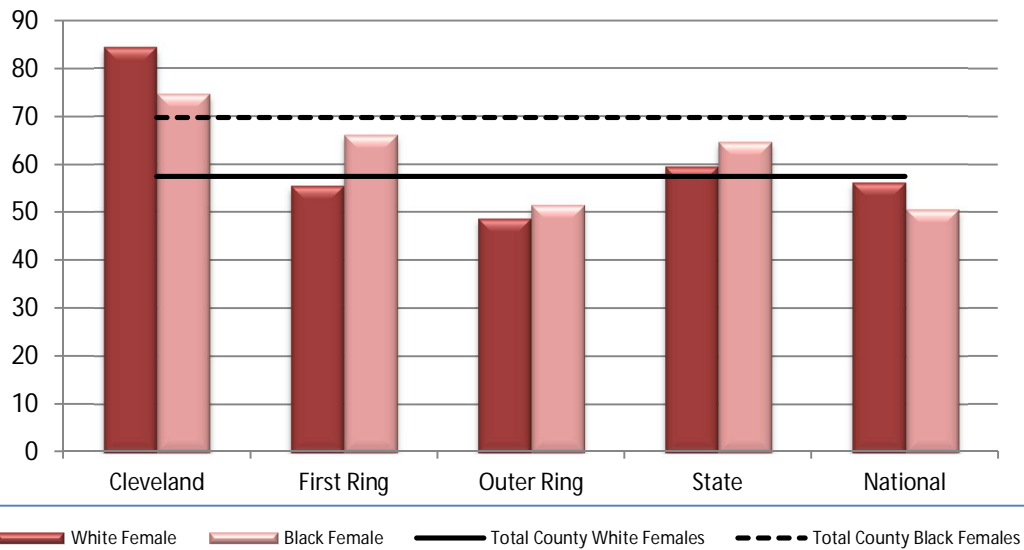


FEMALES

Incidence Rate Lung Cancer per 100,000



Females: Lung Cancer by Race (2007-2011)



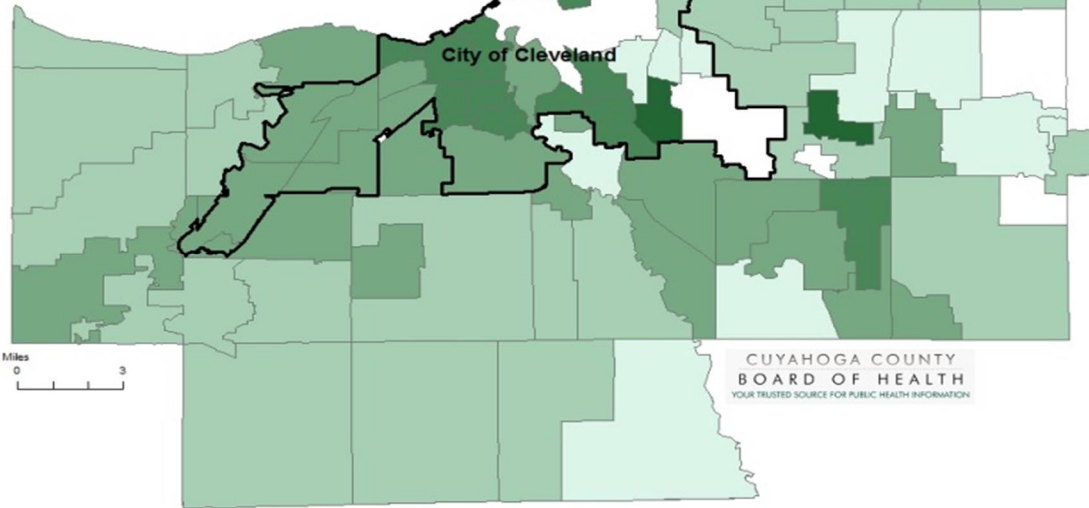
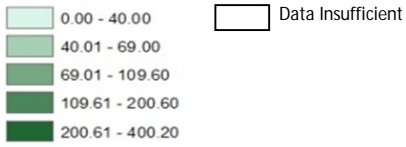
	Cleveland	First Ring	Outer Ring	Cuyahoga County	State	National
White Female	84.4	55.6	48.8	57.4	59.7	55.7
Black Female	74.6	66.2	51.6	69.7	63.8	50.3

**Cuyahoga County:
Lung Cancer Incidence Rates (2007-2011) by Neighborhood/Suburban Municipality**



WHITE

Incidence Rate Lung Cancer per 100,000

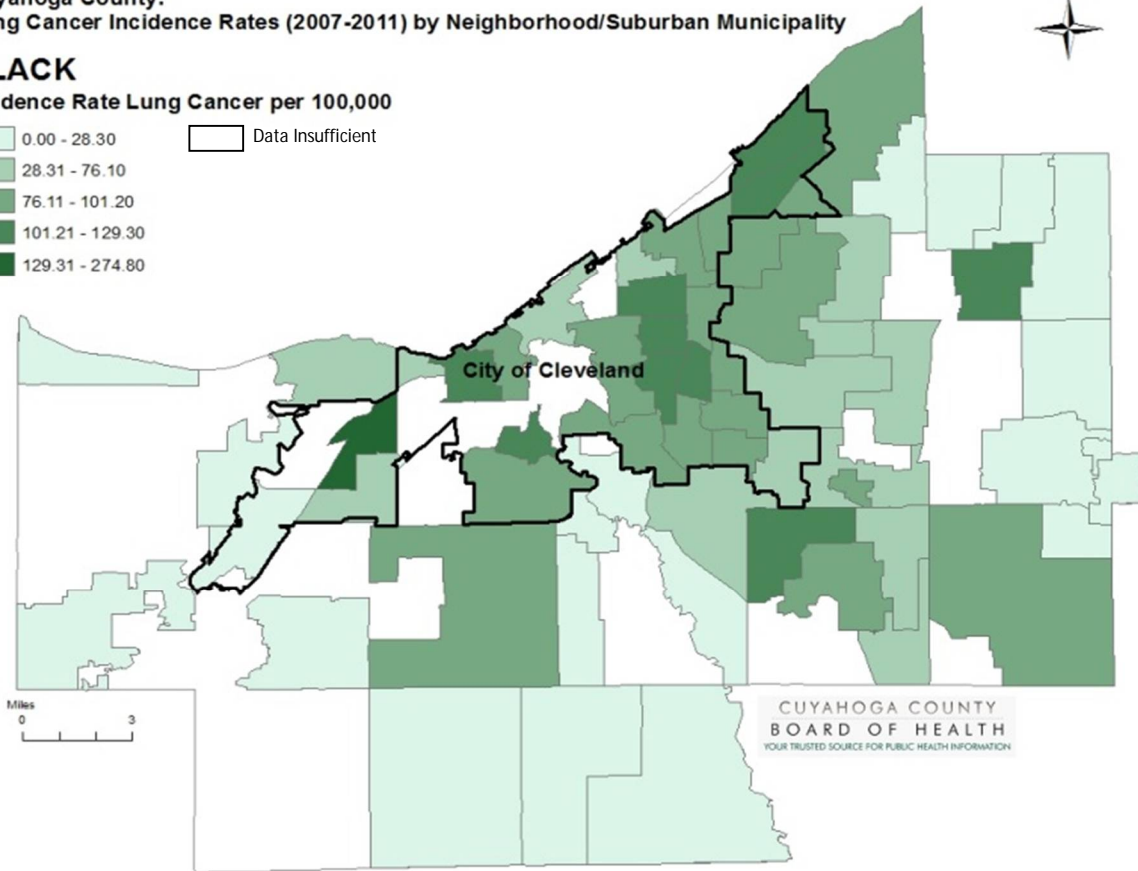
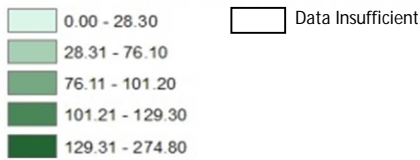


**Cuyahoga County:
Lung Cancer Incidence Rates (2007-2011) by Neighborhood/Suburban Municipality**

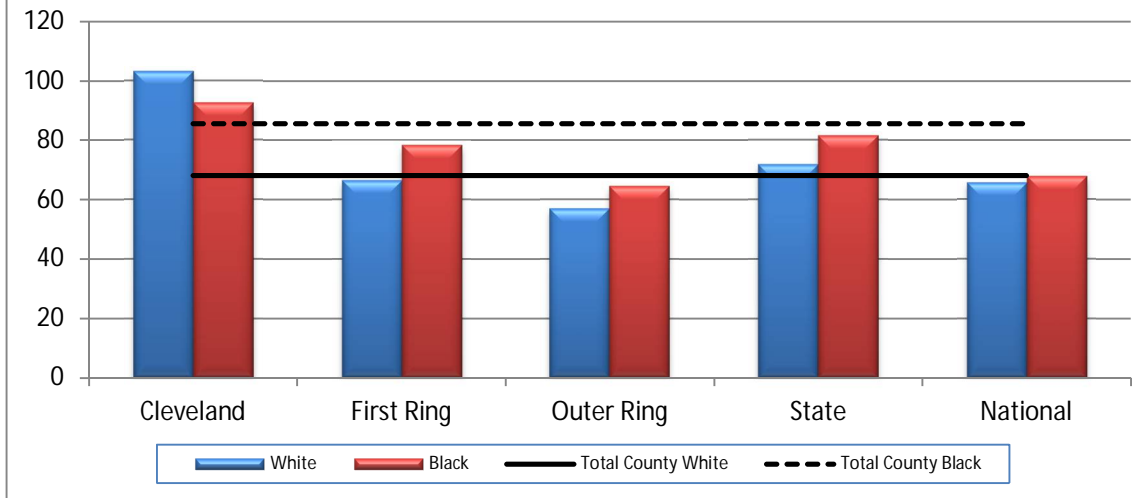


BLACK

Incidence Rate Lung Cancer per 100,000



Lung Cancer by Race (2007-2011)

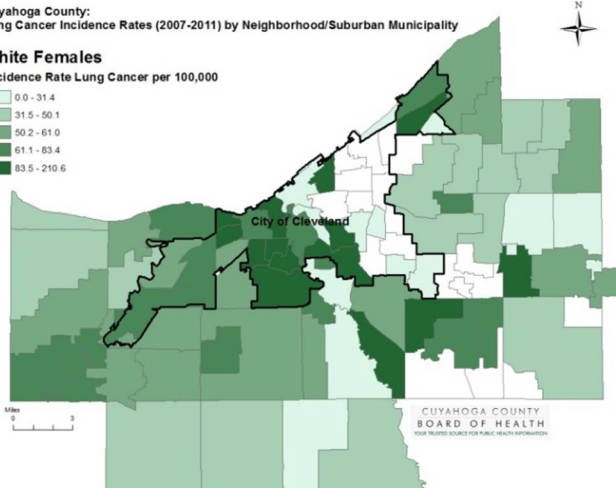


	Cleveland	First Ring	Outer Ring	Cuyahoga County	State	National
White	103.1	66.3	56.9	68.2	71.1	64.4
Black	92.4	78.3	64.4	85.5	79.2	66.7

Cuyahoga County: Lung Cancer Incidence Rates (2007-2011) by Neighborhood/Suburban Municipality

White Females

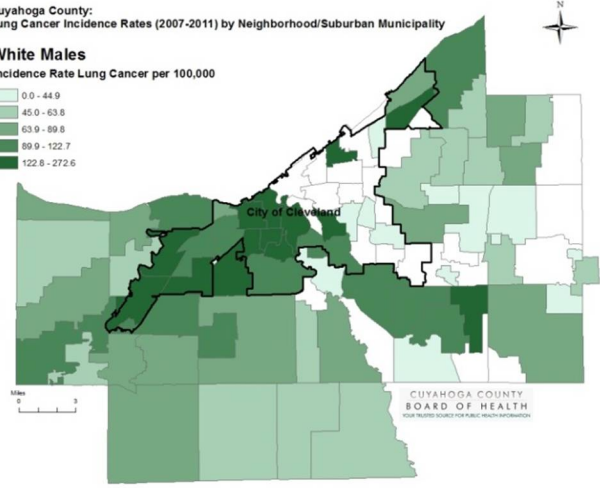
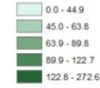
Incidence Rate Lung Cancer per 100,000



Cuyahoga County: Lung Cancer Incidence Rates (2007-2011) by Neighborhood/Suburban Municipality

White Males

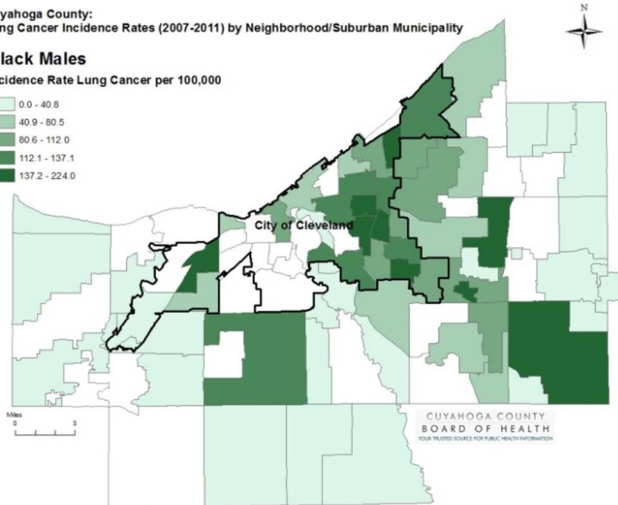
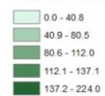
Incidence Rate Lung Cancer per 100,000



Cuyahoga County: Lung Cancer Incidence Rates (2007-2011) by Neighborhood/Suburban Municipality

Black Males

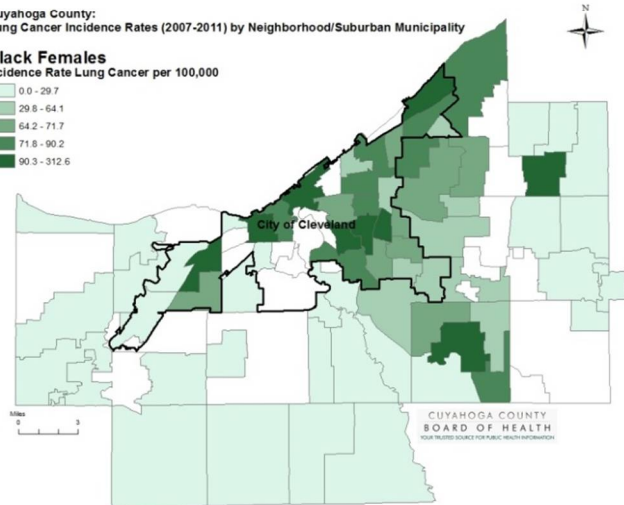
Incidence Rate Lung Cancer per 100,000



Cuyahoga County: Lung Cancer Incidence Rates (2007-2011) by Neighborhood/Suburban Municipality

Black Females

Incidence Rate Lung Cancer per 100,000



Rates were suppressed (depicted as a blank/white area on the map) if total case counts were less than 5 cases per 5 year time period.