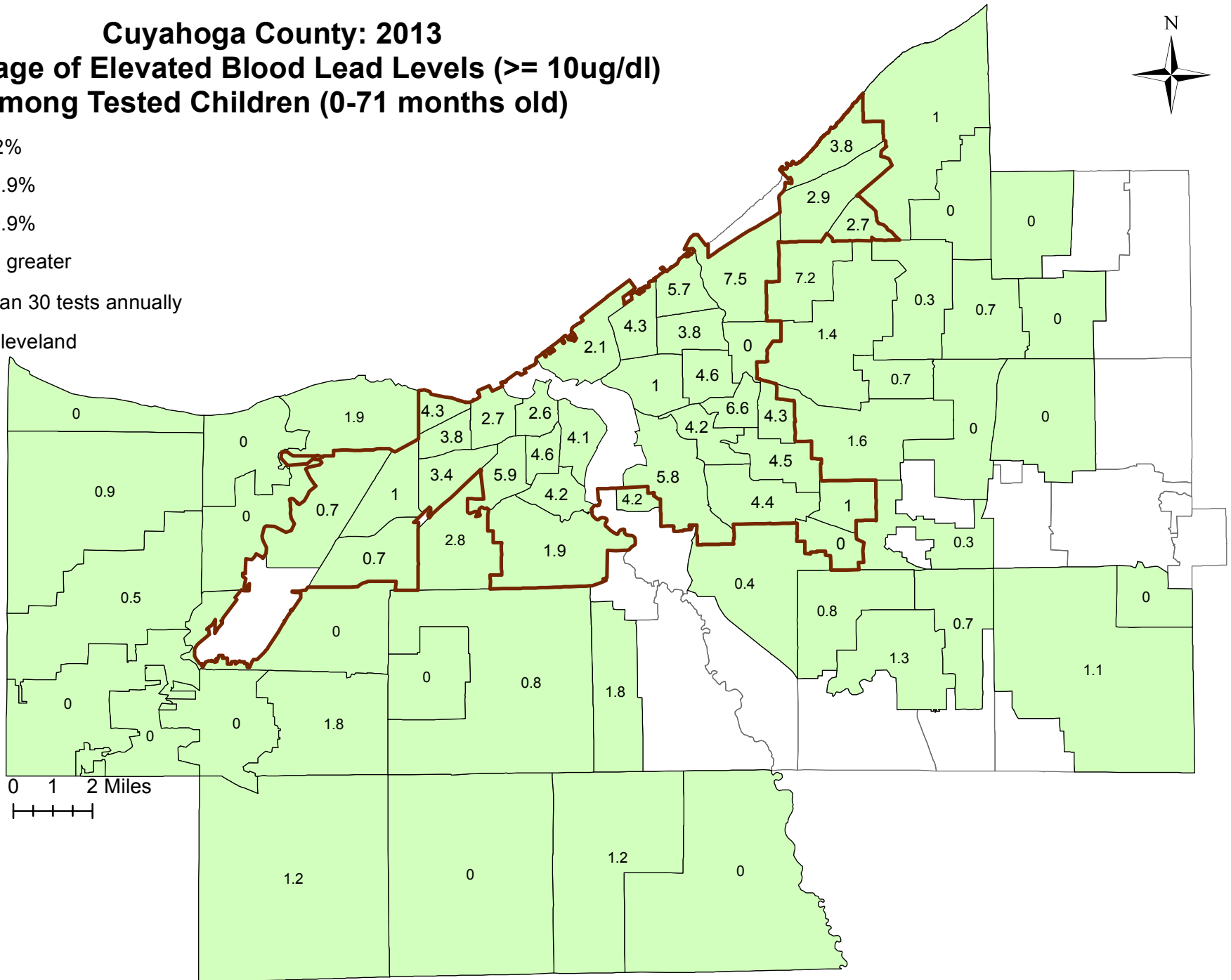


Cuyahoga County: 2013

Percentage of Elevated Blood Lead Levels ($\geq 10\mu\text{g/dl}$) Among Tested Children (0-71 months old)



- Under 12%
- 12.0 - 19.9%
- 20.0 - 29.9%
- 30% and greater
- Fewer than 30 tests annually
- City of Cleveland



Map created and analysis performed by Epidemiology, Surveillance and Informatics at the Cuyahoga County Board of Health, September 2015.
Data Source: The Ohio Department of Health Ohio Healthy Homes and Lead Poisoning Prevention Program (OHLPPP)