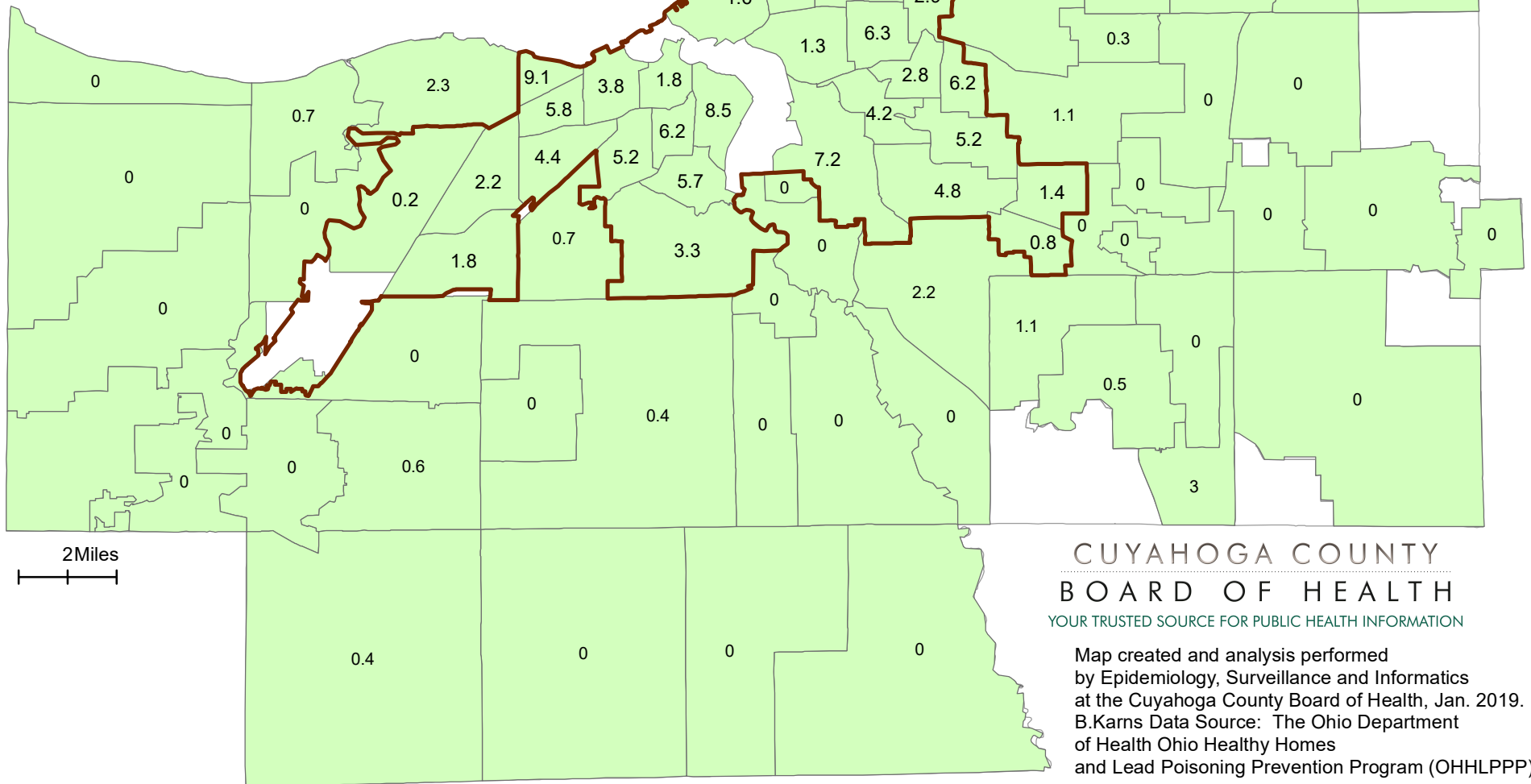


Cuyahoga County: 2017 Percentage of Elevated Blood Lead Levels (>=10 ug/dl) Among Tested Children (0-71 months old)



- Under 12%
- 12.0 - 19.9%
- 20.0 - 29.9%
- 30% and greater
- Insufficient data
- City of Cleveland



CUYAHOGA COUNTY
BOARD OF HEALTH
YOUR TRUSTED SOURCE FOR PUBLIC HEALTH INFORMATION

Map created and analysis performed
by Epidemiology, Surveillance and Informatics
at the Cuyahoga County Board of Health, Jan. 2019.
B.Karns Data Source: The Ohio Department
of Health Ohio Healthy Homes
and Lead Poisoning Prevention Program (OHLPPP).