

# Food Desert Focus Areas Cuyahoga County, 2017

**Legend**

- ★ Major Grocery Store (4)
- Focus Area

**Disease Deaths by Tract: Quartile Score (4-16)**

**Stroke+Heart Disease+Diabetes+Cancer**

- 4
- 5 - 8
- 9 - 12
- 13 - 16

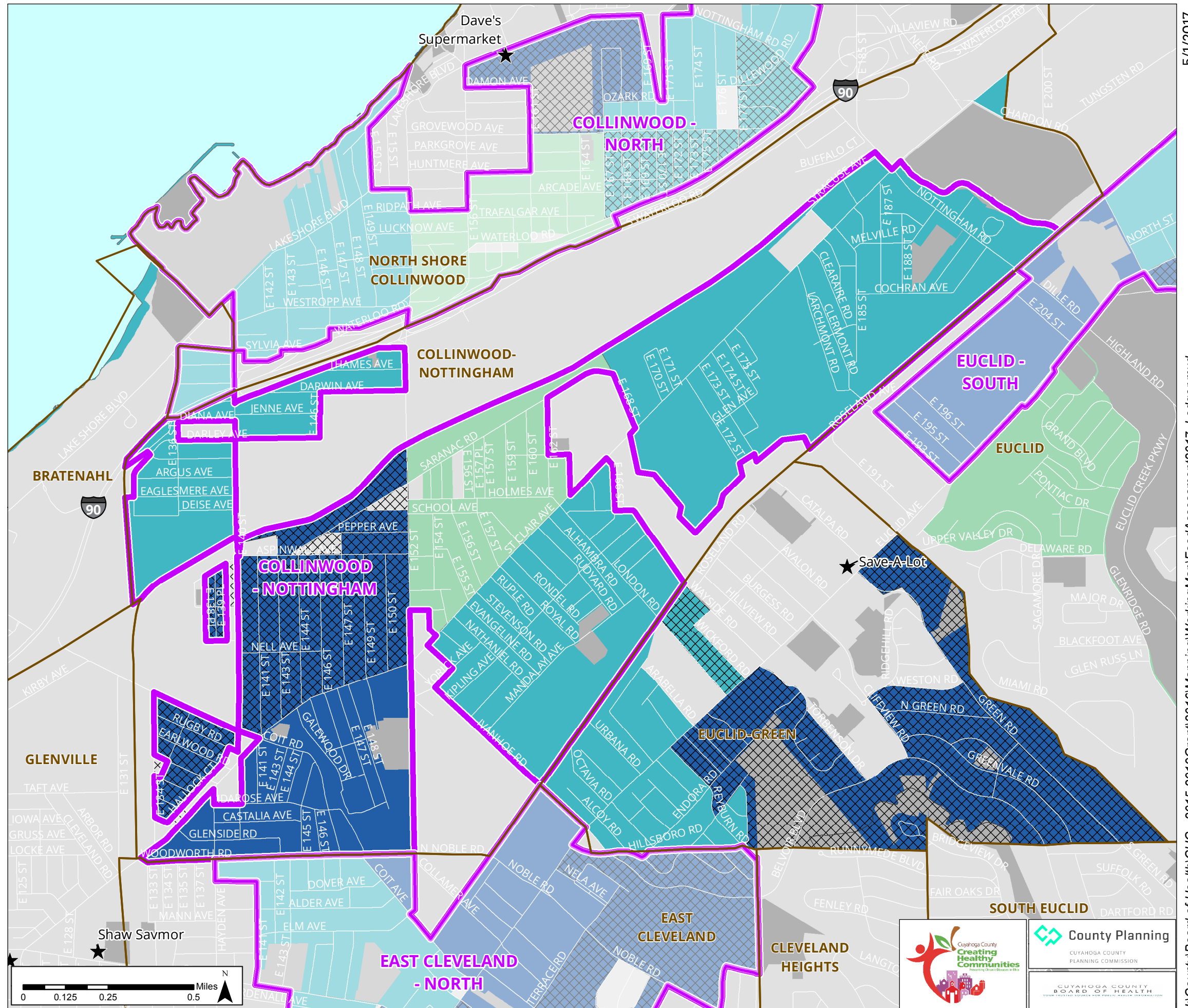
- Distressed Area\*
- Non-Food Desert Area\*\*
- Open Space

**\*Distressed Areas:**  
**High Poverty:**  
 Greater than 20% of population is below poverty level  
**Low Vehicle Access:**  
 More than 100 Households per tract are without a vehicle.

**\*\* Non-Food Desert Areas:**  
**Distance:**  
 Less than 1/2 mile to nearest grocery - OR  
**Income:**  
 Less than 30% of population below 200% of poverty level - OR  
**Population:**  
 Less than 10 persons per census block

Sources:  
 Store Locations: Cleveland and Cuyahoga County Boards of Health, 2016  
 Disease: Cuyahoga County Board of Health, 2012-2016  
 Poverty/Income: U.S. Bureau, American Community Survey, 2010-2014.  
 Food Deserts: Cuyahoga County Planning Commission, 2017.

## DISEASE QUARTILE SCORE



## COLLINWOOD - NOTTINGHAM

5/1/2017

I:\County\Board of Health\CHC - 2015-2019\Grant\2016\Mapping\WorkingMap\FoodAssessment2017\_Ledger.mxd

Cuyahoga County  
 Creating Healthy Communities  
 County Planning  
 CUYAHOGA COUNTY  
 PLANNING COMMISSION  
 CUYAHOGA COUNTY  
 BOARD OF HEALTH  
 YOUR TRUSTED SOURCE FOR PUBLIC HEALTH INFORMATION