

Food Desert Focus Areas Cuyahoga County, 2017

Legend

- ★ Major Grocery Store (8)
- Focus Area

Food Desert Areas

By Miles to Nearest Grocery

- 0.0 - 0.5 (Non-food Desert)
- 0.6 - 1.0
- 1.1 - 2.0
- 2.1 or More

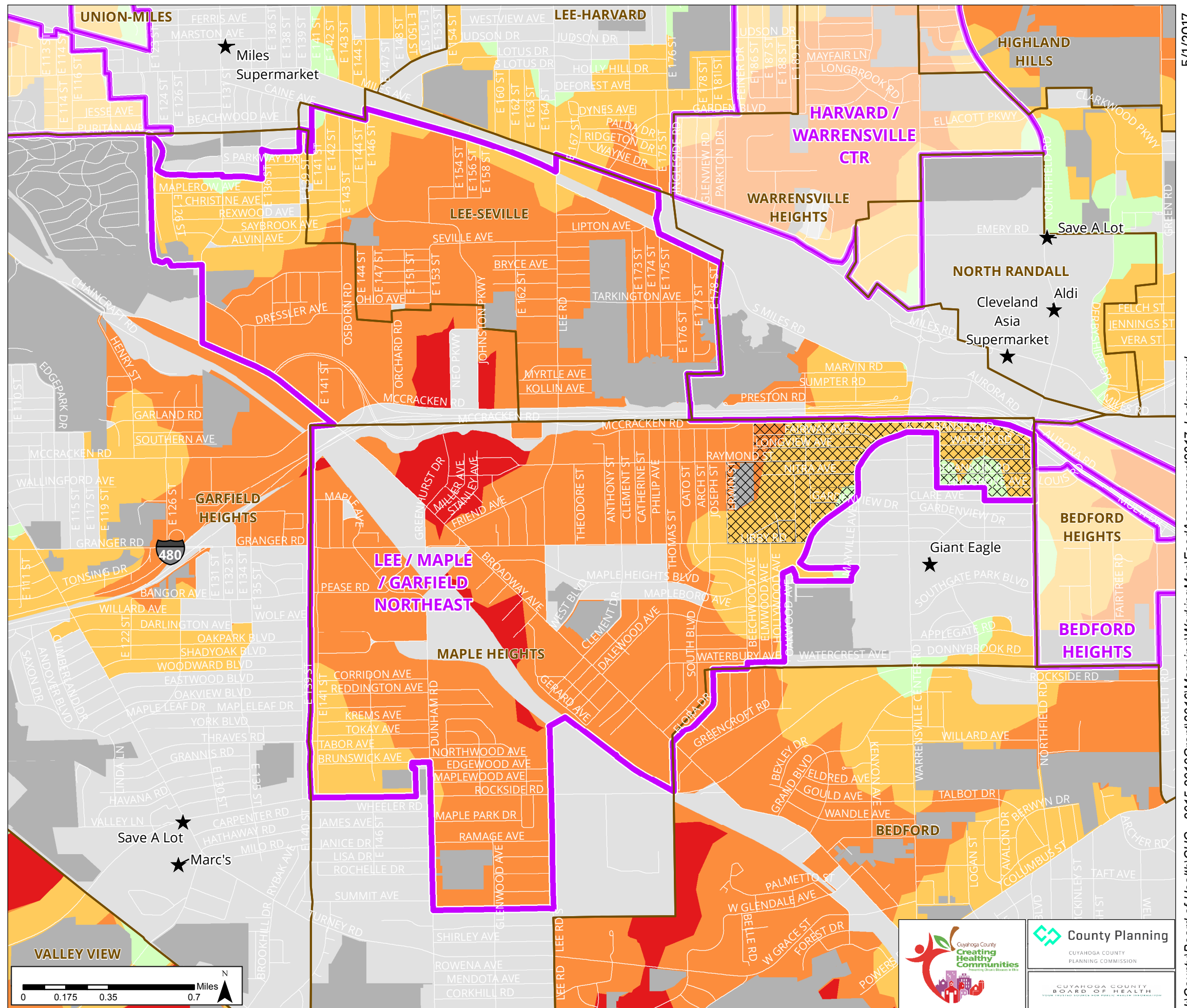
- ▨ Distressed Area*
- Non-Food Desert Area**
- Open Space

***Distressed Areas:**
High Poverty:
 Greater than 20% of population is below poverty level
Low Vehicle Access:
 More than 100 Households per tract are without a vehicle.

**** Non-Food Desert Areas:**
Distance:
 Less than 1/2 mile to nearest grocery - OR
Income:
 Less than 30% of population below 200% of poverty level - OR
Population:
 Less than 10 persons per census block

Sources:
 Store Locations: Cleveland and Cuyahoga County Boards of Health, 2016
 Disease: Cuyahoga County Board of Health, 2012-2016
 Poverty/Income: U.S. Bureau, American Community Survey, 2010-2014.
 Food Deserts: Cuyahoga County Planning Commission, 2017.

DISTANCE FROM GROCERY



LEE / MAPLE / GARFIELD NORTHEAST

5/1/2017

J:\County\Board of Health\CHC - 2015-2019\Grant\2016\Mapping\WorkingMap\FoodAssessment2017_Ledger.mxd