

# Food Desert Focus Areas Cuyahoga County, 2017

## DISTANCE FROM GROCERY

## BEDFORD-SOUTH / OAKWOOD

**Legend**

- ★ Major Grocery Store (1)
- Focus Area

**Food Desert Areas**

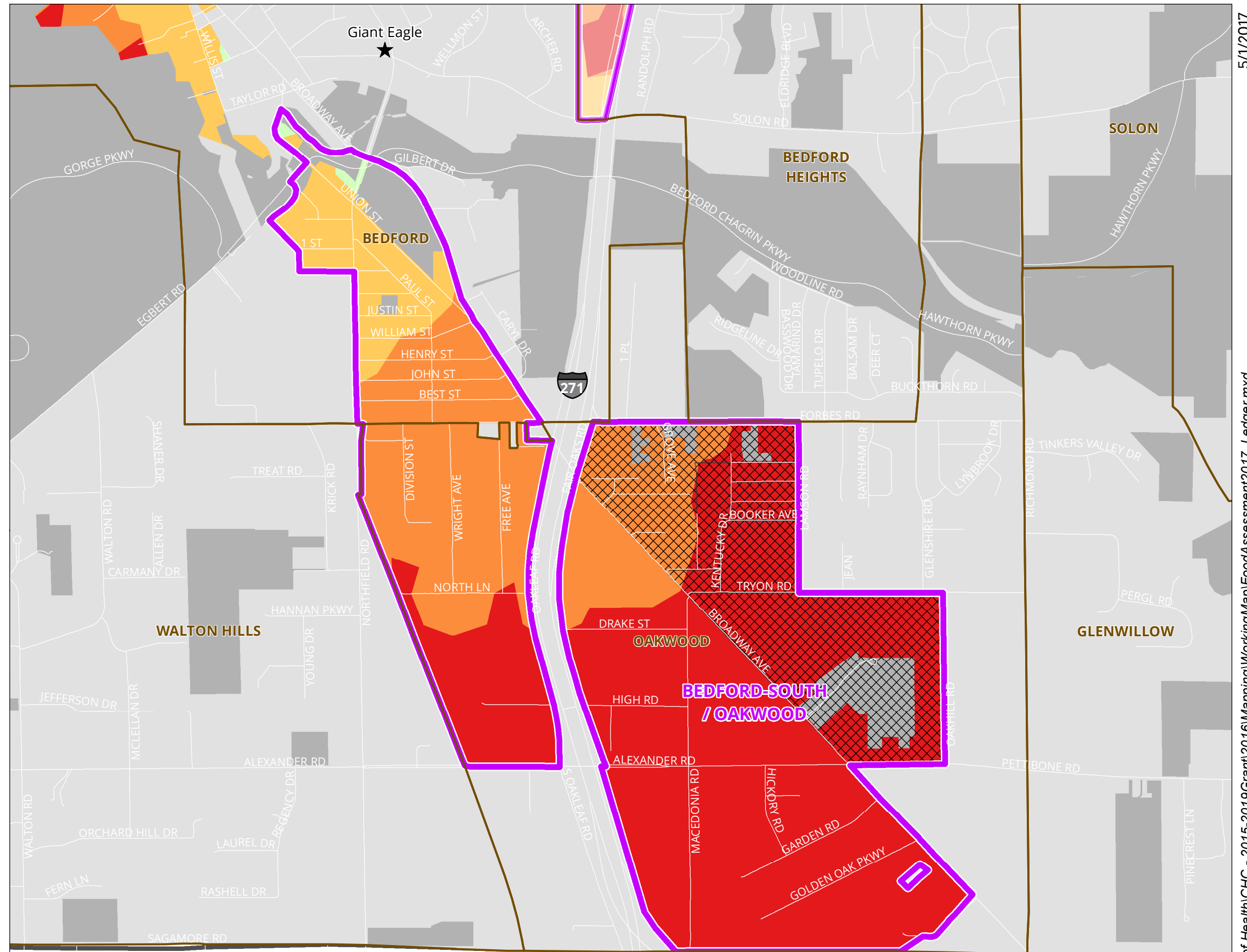
By Miles to Nearest Grocery

- 0.0 - 0.5 (Non-food Desert)
- 0.6 - 1.0
- 1.1 - 2.0
- 2.1 or More

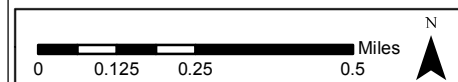
- ▨ Distressed Area\*
- Non-Food Desert Area\*\*
- Open Space

**\*Distressed Areas:**  
**High Poverty:**  
 Greater than 20% of population is below poverty level  
**Low Vehicle Access:**  
 More than 100 Households per tract are without a vehicle.

**\*\* Non-Food Desert Areas:**  
**Distance:**  
 Less than 1/2 mile to nearest grocery - OR  
**Income:**  
 Less than 30% of population below 200% of poverty level - OR  
**Population:**  
 Less than 10 persons per census block



Sources:  
 Store Locations: Cleveland and Cuyahoga County Boards of Health, 2016  
 Disease: Cuyahoga County Board of Health, 2012-2016  
 Poverty/Income: U.S. Bureau, American Community Survey, 2010-2014.  
 Food Deserts: Cuyahoga County Planning Commission, 2017.



SUMMIT  
COUNTY

