

2015 HIV/AIDS EPIDEMIOLOGY PROFILE RYAN WHITE PART A CLEVELAND TGA/CUYAHOGA COUNTY

Cleveland Department of Public Health
Office of Communicable Disease Surveillance and Epidemiology

Presented by:
Vino Sundaram, MPH
Epidemiologist

Prepared for:
Cleveland Transitional Grant Area (TGA) Planning Council, Ryan White
HIV/AIDS Part A, Annual Priority Setting and Resource Allocation
(PSRA) Event

July 12, 2017



DATA DISCLAIMER!

DEFINITIONS YOU NEED TO KNOW

■ Prevalence

Prevalence refers to the number of new cases that develop plus existing cases in a population during specific time period

Number of new cases plus existing cases _____ X 100,000
Total number in population during specific time

*Definitions from *Epidemiology for Public Health* Robert H. Friis and Thomas Sellers Fifth Edition, 2014
Jones & Bartlett Learning, LLC

DEFINITIONS YOU NEED TO KNOW

■ Incidence

Incidence refers to the number of new cases of disease that develop in a population at risk for disease during specific time period

$$\frac{\text{Number of new cases}}{\text{Total number in population during specific time}} \times 100,000$$

*Definitions from Epidemiology for Public Health Robert H. Friis and Thomas Sellers Fifth Edition, 2014 Jones & Bartlett Learning, LLC

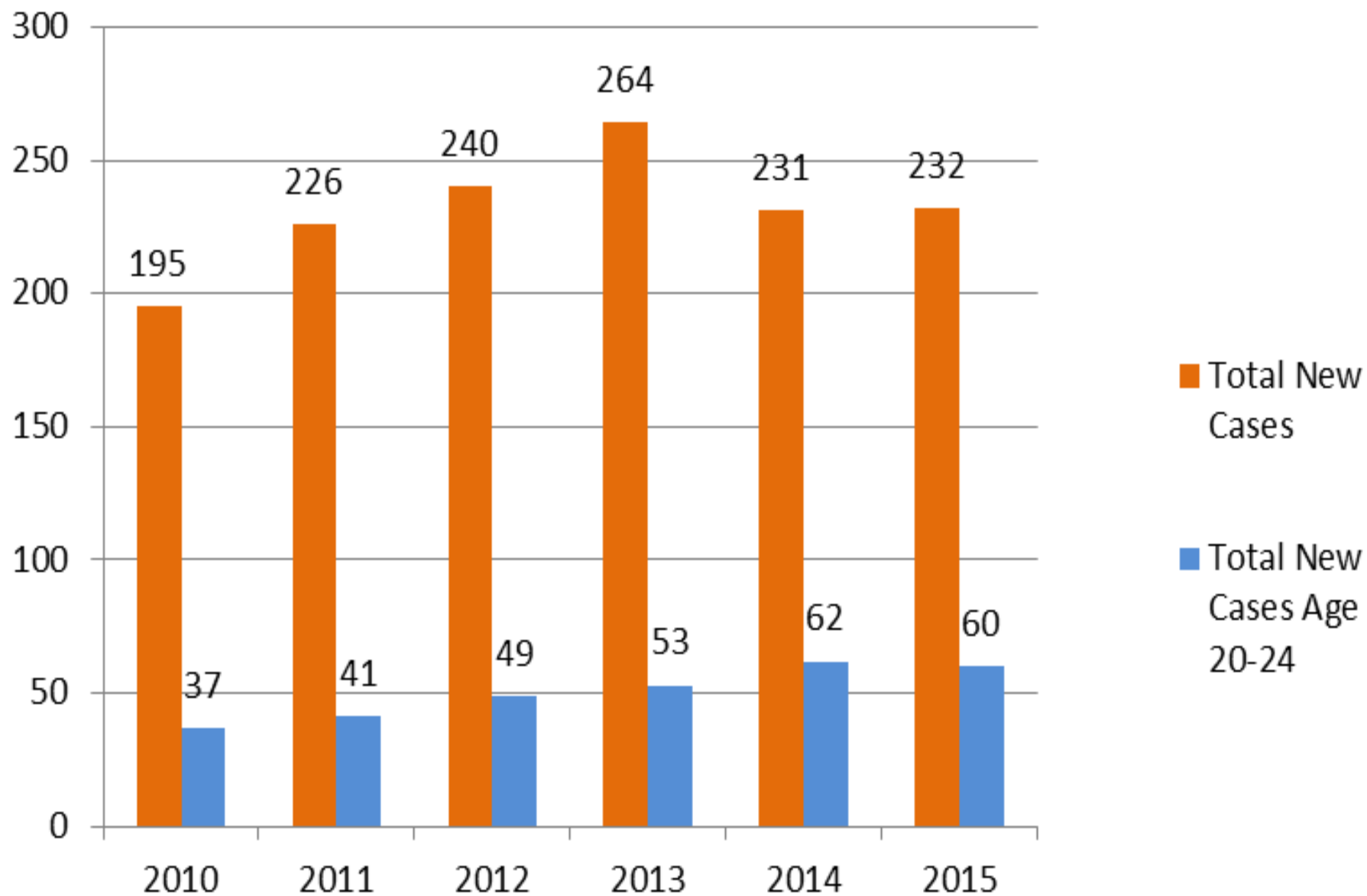
2015 CLEVELAND TGA DEMOGRAPHICS

- 2015 -> 232 new HIV/AIDS reported
- 88% (n=204) of new cases in 2015 were male
- Highest number of new cases were in the 20-24 age group (n=60)
- 61% (n=141) of the cases were African-American; specifically, 54% (n=126) of the new cases were African-American males.
- 58% (n=132) of the cases had MSM exposure; only about 5% (n=11) of cases in TGA had Injection Drug Use exposure.

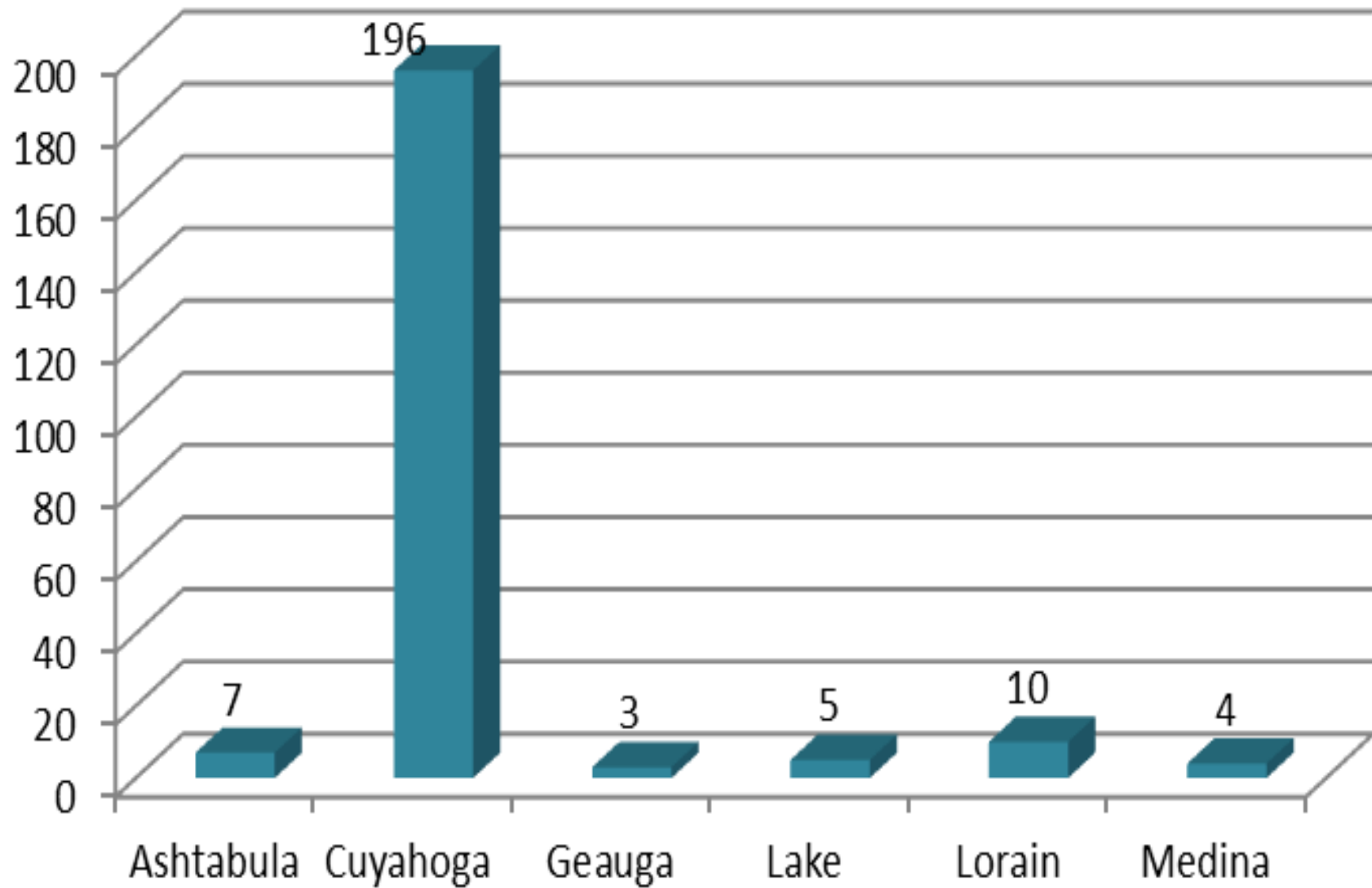
CLEVELAND TGA DISPARITIES, INCIDENCE CASES, 2015

Age Group	Cuyahoga County Resident (Outside of CLE)	CLE Resident	CLE TGA
<13	1	0	0
13-14	0	0	0
15-19	8	10	15
20-24	27	30	60
25-29	19	24	48
30-34	5	17	28
35-39	10	13	25
40-44	3	8	13
45-49	7	5	15
50-54	7	5	15
55-64	4	3	8
65+	0	3	5
Total	91	118	232

New Cases in Cleveland TGA, 2010-2015



2015 New Cases by County, Cleveland TGA



DISEASE STATUS AMONG 2015 CASES, CLEVELAND TGA

	Disease Status at Initial Diagnosis		
	HIV (not AIDS)	HIV & Later AIDS	AIDS
Ashtabula	6	0	0
Cuyahoga	177	11	8
Geauga	3	0	0
Lake	5	0	0
Lorain	7	3	0
Medina	4	0	0

PREVALENCE AND INCIDENCE

■ Prevalence

2015 Prevalence Rate for Cuyahoga County -> 415.5

2015 Prevalence Rate for Cleveland -> 895.0

■ Incidence

2015 Incidence Rate for CC -> 16.3

2015 Incidence Rate for Cleveland -> 30.2

2015 Incidence Rate for Ohio -> 7.8

*Cuyahoga County population denominator used: 1,263,189

*City of Cleveland population denominator used: 390,584

(2015 ACS 5-year population estimates)

*Ohio incidence rate calculated using 2014 U.S. Census estimates

CUYAHOGA COUNTY, DEMOGRAPHICS

- In 2015...

209 new cases of HIV

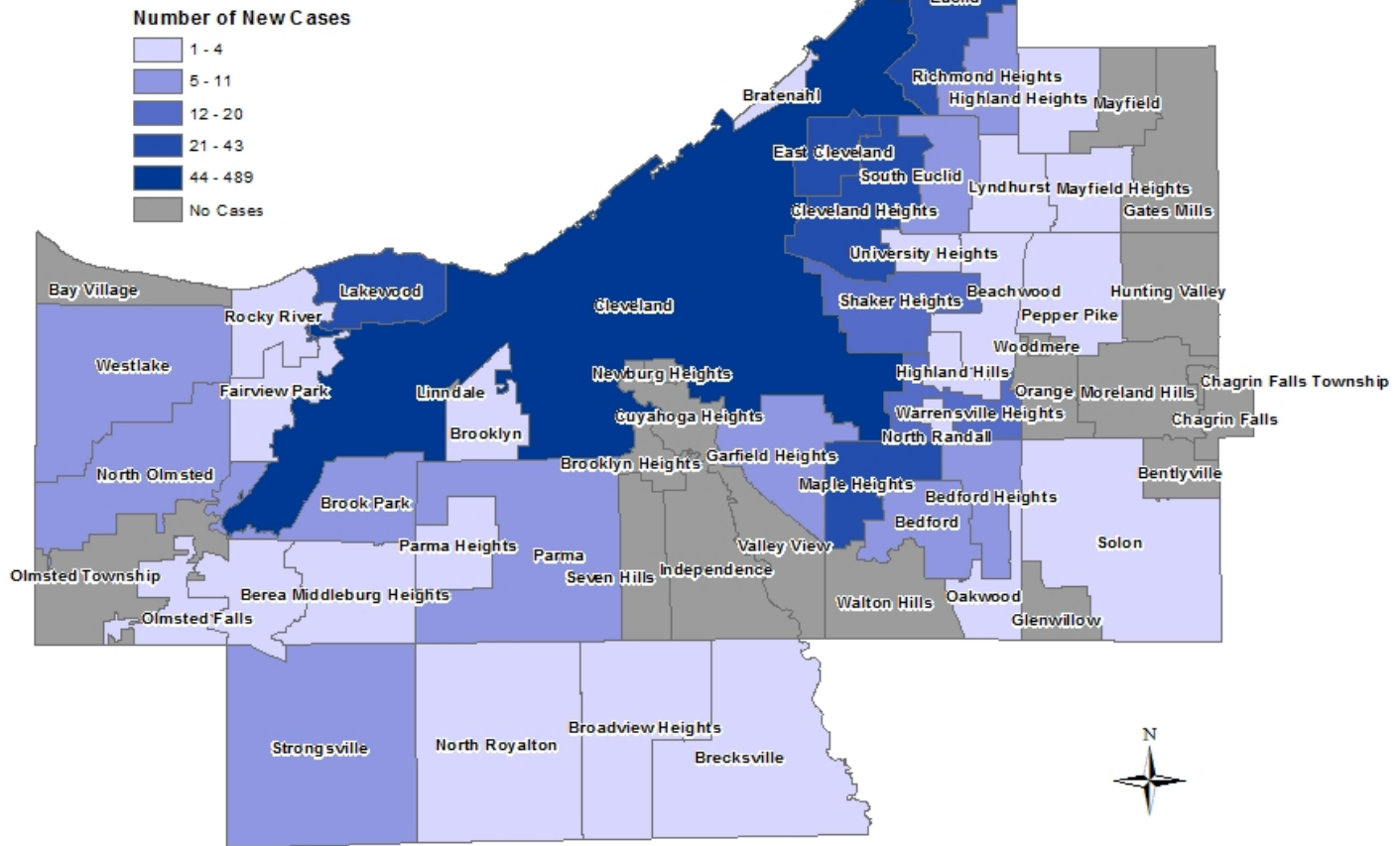
87% (n=182) of the cases were male

Highest number of cases were age 20-24yo (n=57)

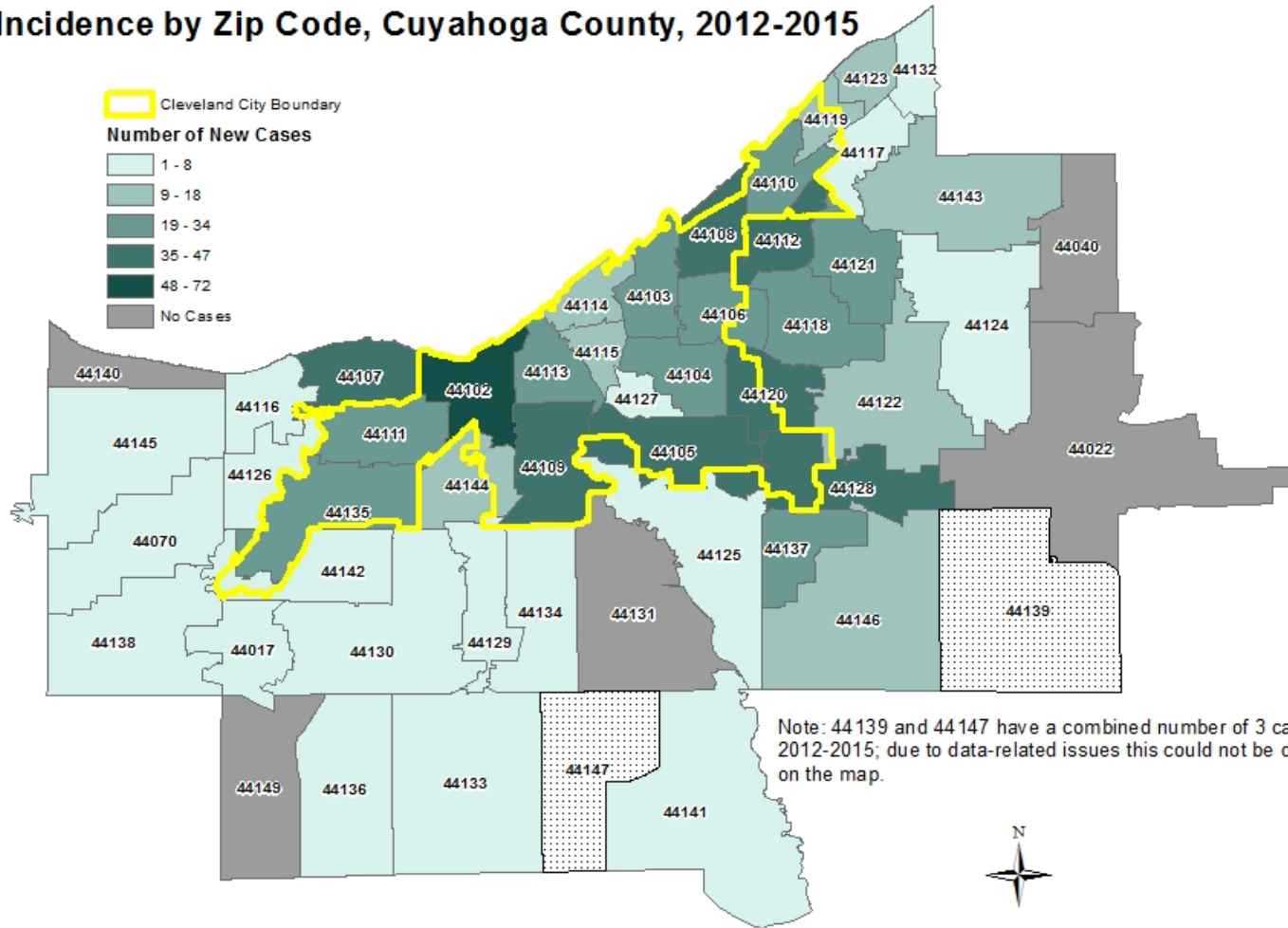
Eight cases were below the age of 18 when diagnosed

69% (n=145) of cases were African-American.

HIV Incidence in Cuyahoga County, by Municipality, 2012-2015



HIV Incidence by Zip Code, Cuyahoga County, 2012-2015



CUYAHOGA COUNTY, RISK FACTORS

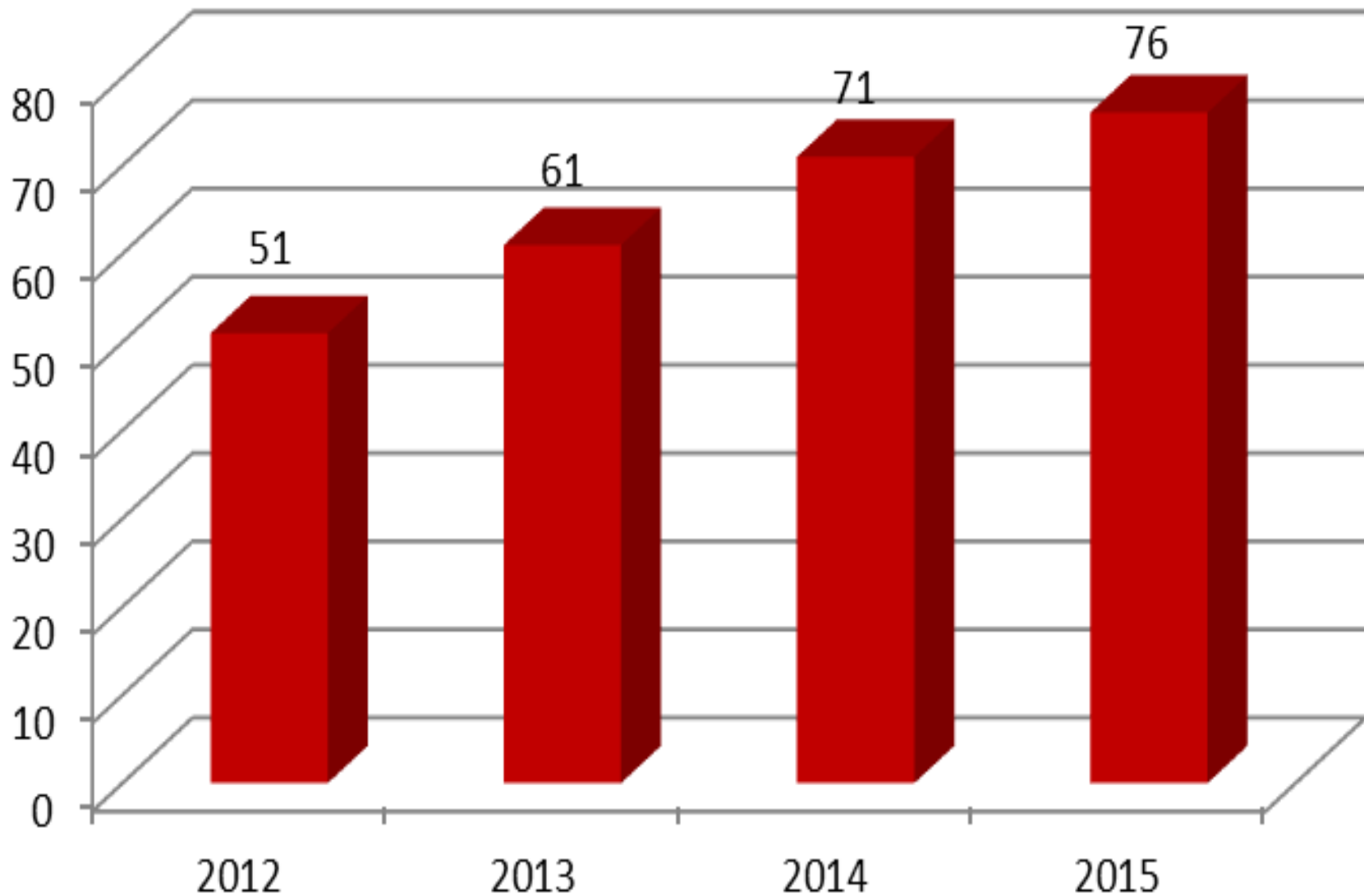
- 56% (n=102) of all male cases reported MSM. This is 49% of all new cases in the county.
- 42% (n=88) of cases reported having an anonymous sex partner in the 12 months prior to diagnosis
- 21% (n=43) of cases reported having met a sex partner through the internet 12 months prior to diagnosis
- 19% (n=39) of cases had a history of an STD diagnosis
- 13% (n=28) of cases had a diagnosis of syphilis at the time they were also diagnosed with HIV (co-infection).
- Syphilis Cases 2015 -> 59% were HIV positive at the time of syphilis diagnosis

AT-RISK POPULATIONS

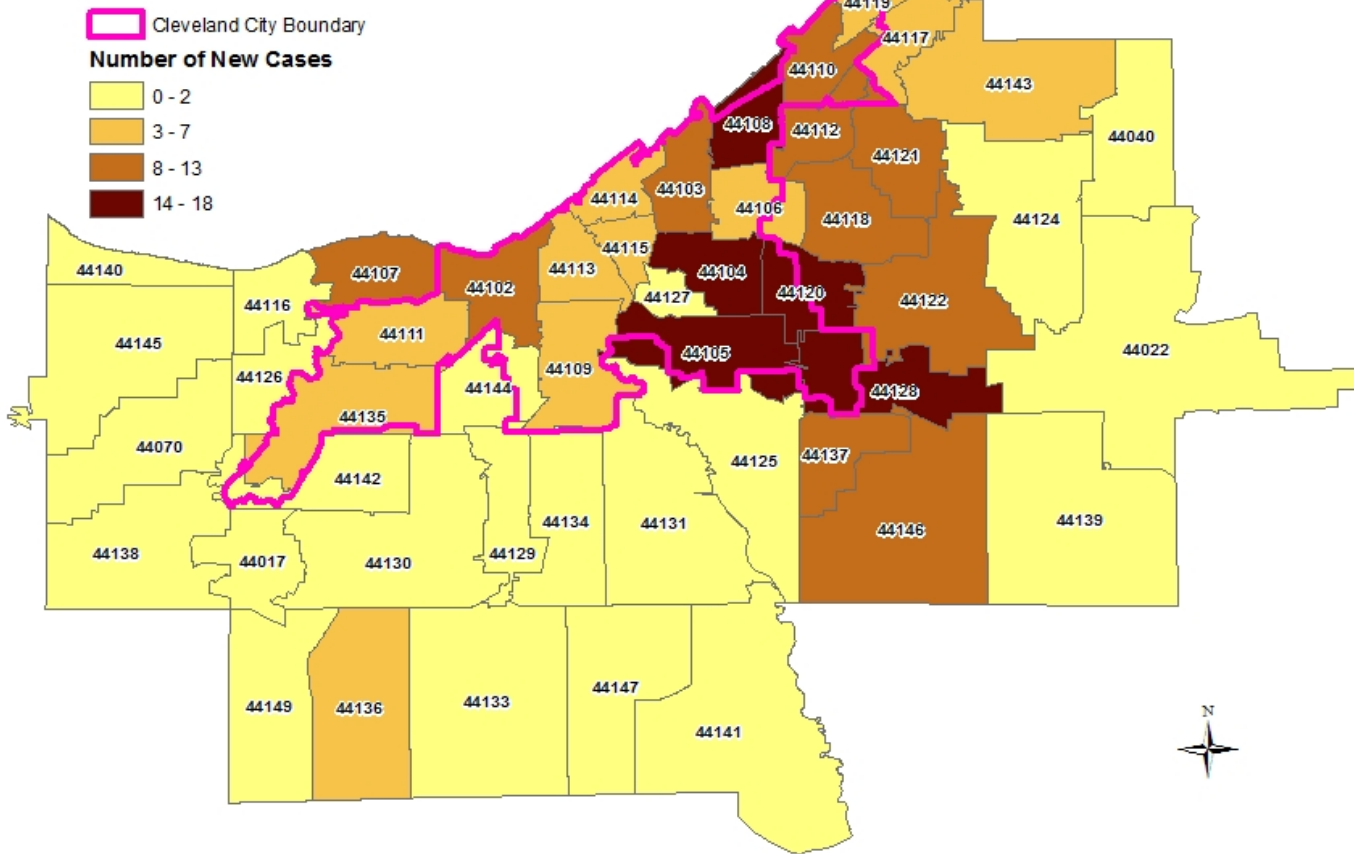
- In Cuyahoga County, the most at-risk population for HIV is African-American MSM Under Age 30.
- 57% of the county's new cases in 2015, were under the age of 30 (n=119)
- Of the 119 cases below age 30, 83% were African-American (n=99)
- Of the 99 cases that are A-A and below age 30, 63% were MSM (n=63)

- Of the county's 209 new cases in 2015, about 30% are AA-MSM Under Age 30

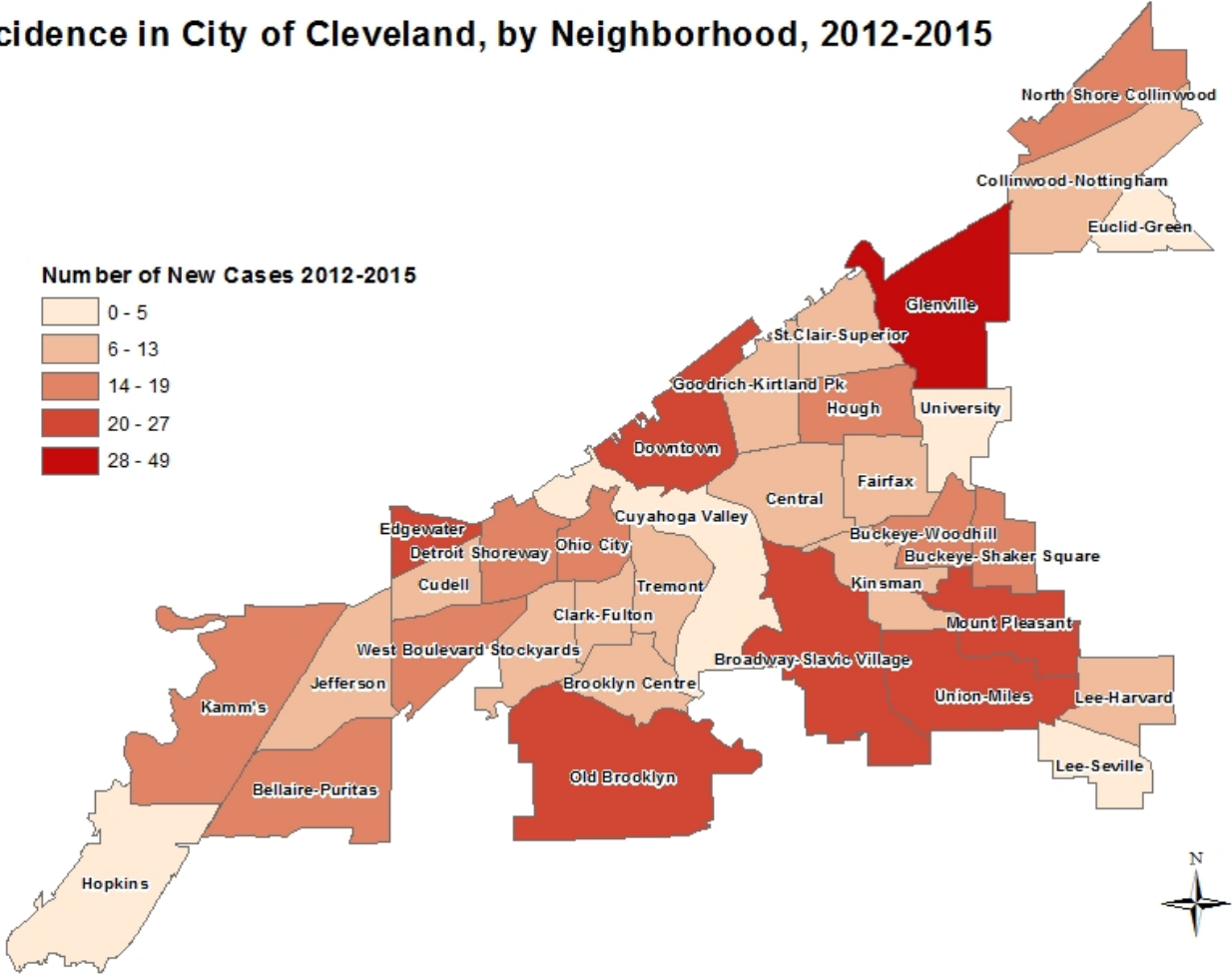
New HIV Cases Among 24yo and Younger, Cuyahoga County



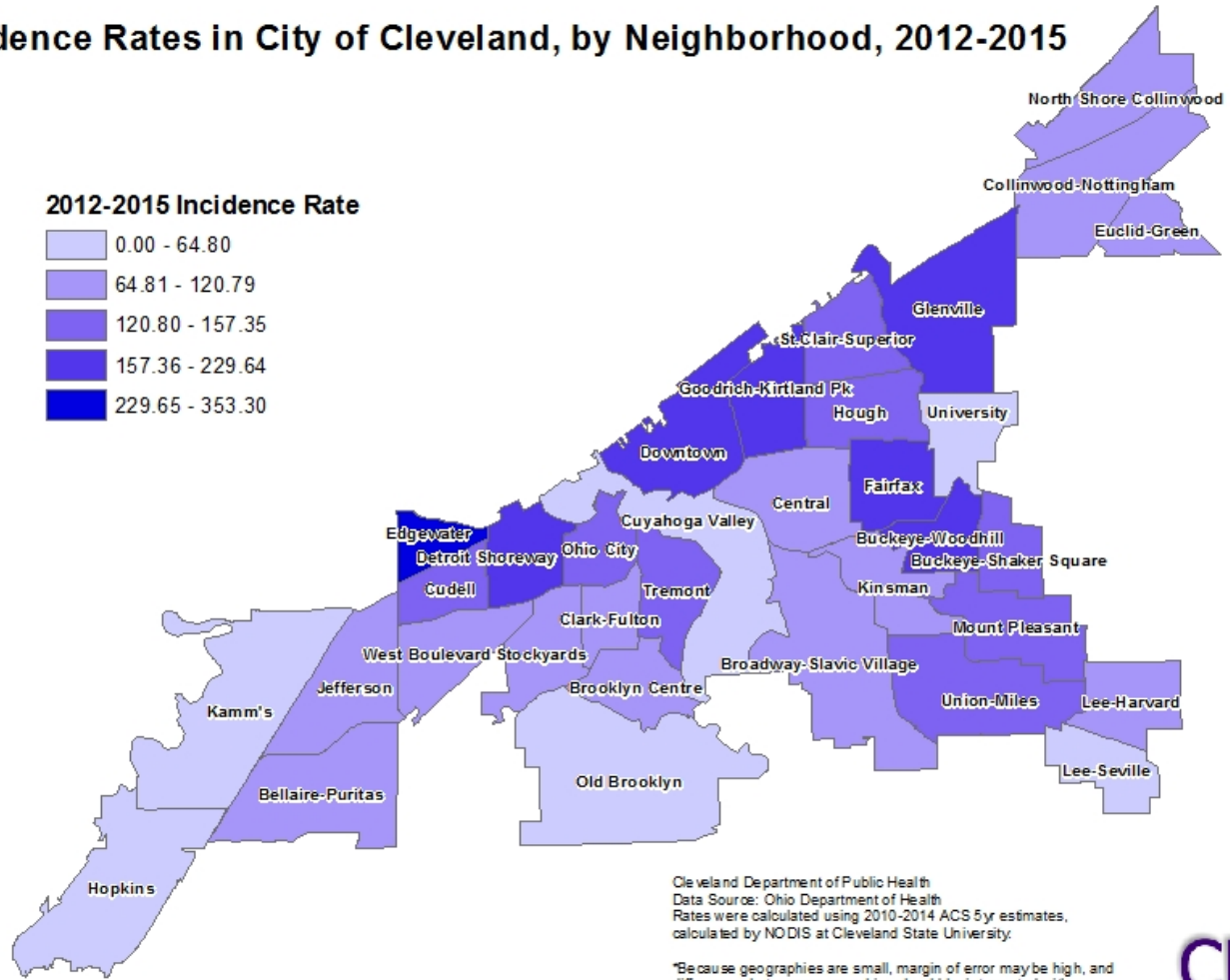
HIV Incidence in Persons Age 24 and Younger by Zip Code, Cuyahoga County, 2012-2015



HIV Incidence in City of Cleveland, by Neighborhood, 2012-2015



HIV Incidence Rates in City of Cleveland, by Neighborhood, 2012-2015



Cleveland Department of Public Health
 Data Source: Ohio Department of Health
 Rates were calculated using 2010-2014 ACS 5y estimates,
 calculated by NODIS at Cleveland State University.

*Because geographies are small, margin of error may be high, and differences between geographies should be interpreted with caution. Rates may be unstable due to small numbers of cases.



RECOMMENDATIONS

- **Cleveland TGA**

- As the epidemic grows among A-A MSM youth, making sure that population is aware of Ryan White Services (i.e. outreach, etc.)

- **Targeted testing in neighborhoods with highest numbers of HIV**

- **Increased PrEP awareness**

- **Better reach to most at-risk populations**

- **Increased outreach in schools**

THANK YOU!

Contact Info

Vino Sundaram, MPH

vsundaram@city.cleveland.oh.us

Office: 216-664-4616

Data Source: Ohio Department of Health

*Numbers may change if additional information is obtained.