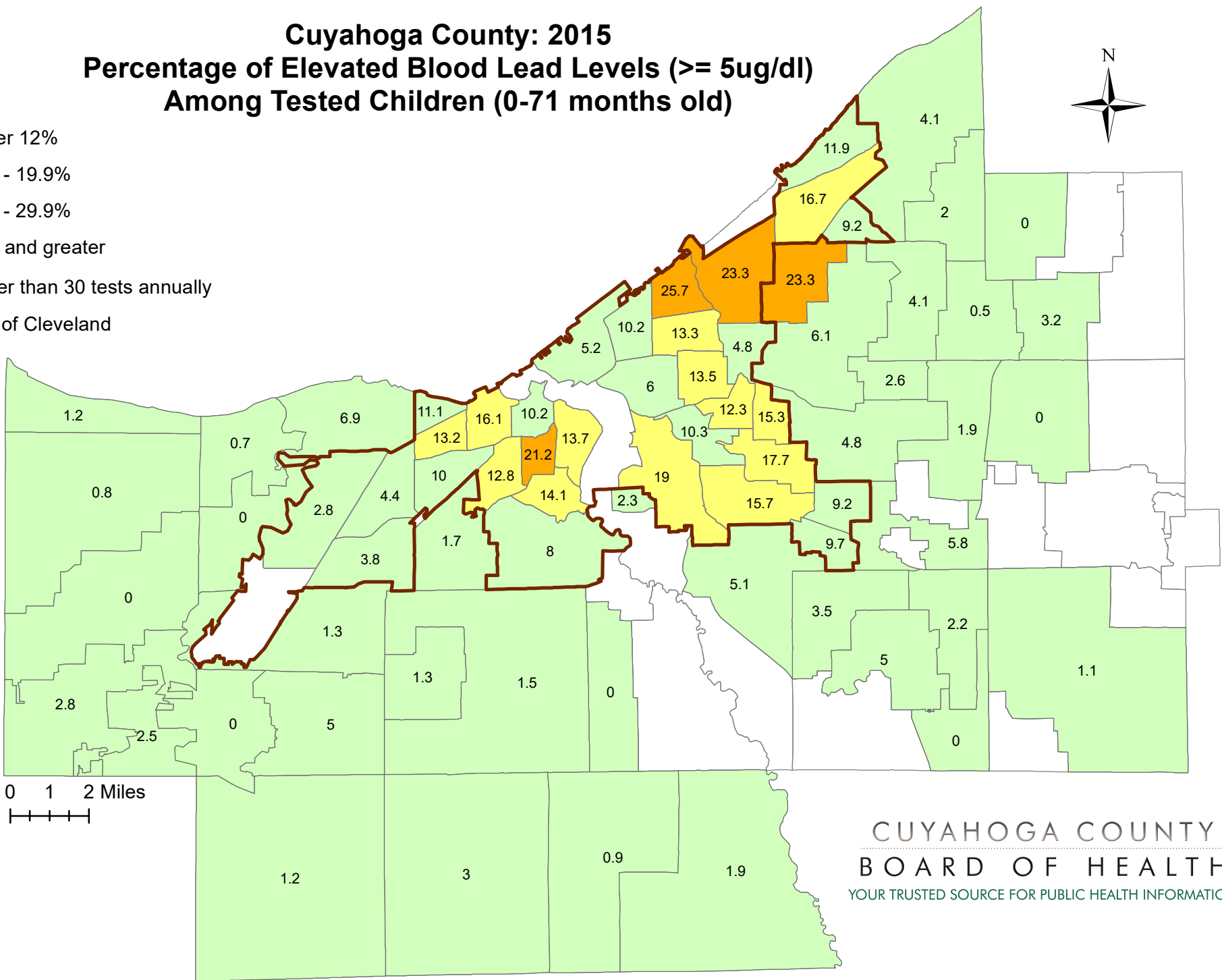


Cuyahoga County: 2015 Percentage of Elevated Blood Lead Levels ($\geq 5\mu\text{g}/\text{dl}$) Among Tested Children (0-71 months old)

- Under 12%
- 12.0 - 19.9%
- 20.0 - 29.9%
- 30% and greater
- Fewer than 30 tests annually
- City of Cleveland



0 1 2 Miles
|-----|

CUYAHOGA COUNTY
BOARD OF HEALTH
YOUR TRUSTED SOURCE FOR PUBLIC HEALTH INFORMATION

Map created and analysis performed by Epidemiology, Surveillance and Informatics at the Cuyahoga County Board of Health, December 2016. B.Gawelek
Data Source: The Ohio Department of Health Ohio Healthy Homes and Lead Poisoning Prevention Program (OHLPPP)