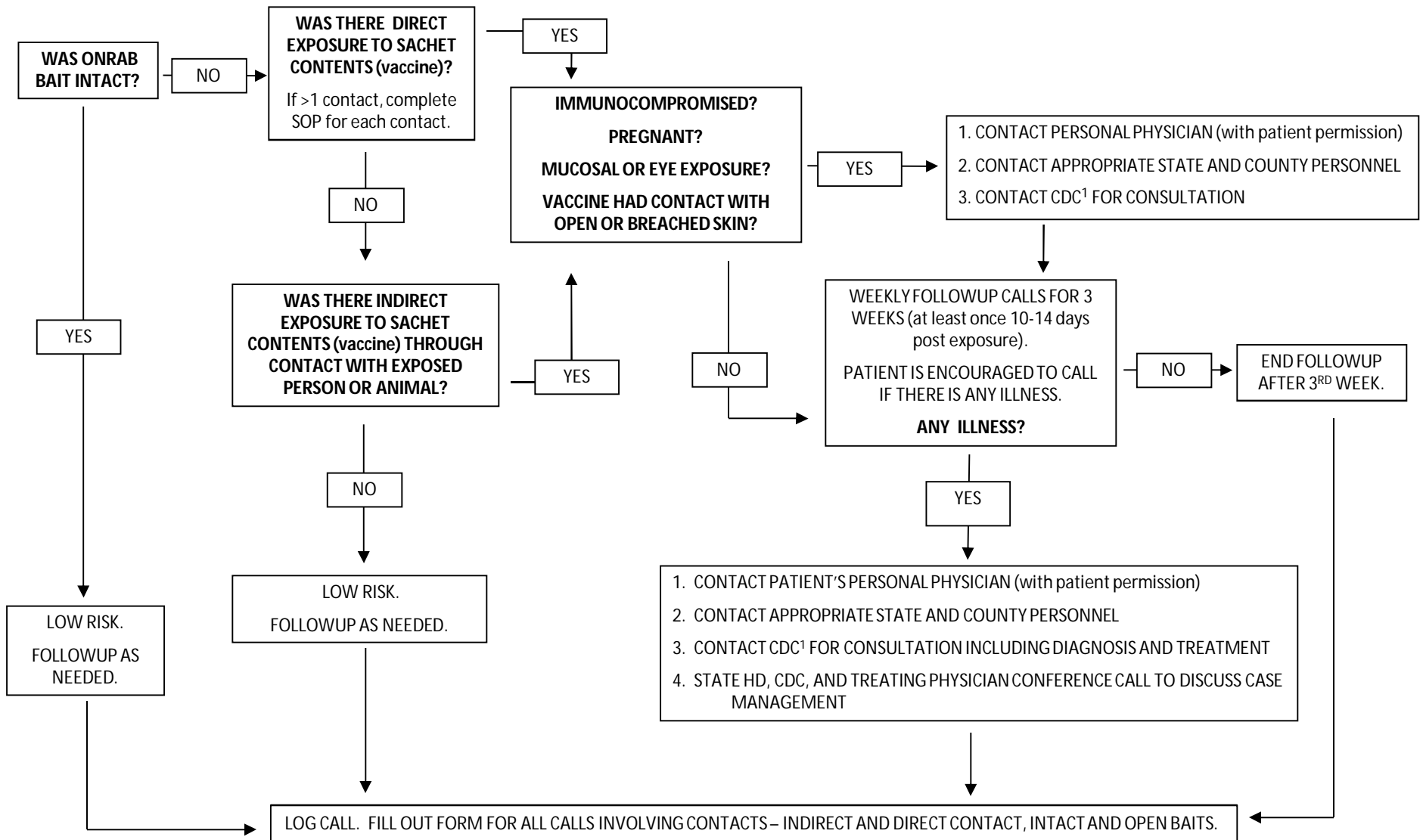


SUGGESTED SOP FOR ONRAB ORAL RABIES VACCINATION BAIT CONTACTS (HUMAN)

Please note this is a suggested SOP. State and county HDs are not required to follow this SOP and may alter the components to accommodate their program.



¹CDC Emergency Operations Center: 770-488-7100

*This document was originally created for V-RG ORV by Andrea McCollum and Brett Petersen (ige3@cdc.gov), 2010 and modified by Richard Chipman (richard.b.chipman@aphis.usda.gov) for ONRAB in 2011-2013.

The content is based on information and SOPs from USDA, TX, and OH.